

**Master control QCC3031 Bluetooth version V5.1 stereo audio module, providing customization in batches**

**1. Size: 3.2x4cm**

**2. Analog output (RP, RN, LP, LN), I2S output (BCK, LRCK, DATA, MCLK), SPDIF (DATA)**

**3. Function keys: KCOM, PLAY, VOL+, VOL-, PREV, NEXT, high level 3V3 is valid.**

**Key Description:**

**"KCOM": key common port**

**"VOL+": short press volume up, long press volume up**

**"VOL-": short press volume down, long press volume down**

**"NEXT": Short press the next song**

**"PREV": Short press the previous song**

**"PLAY": Short press to play/pause/answer/hang up, long press for 1 second to reject incoming calls**

**Special function description:**

**"PLAY": Press and hold for 3 seconds to force into pairing mode, press and hold for 6 seconds to clear the pairing list**

**"PLAY" + "VOL+": Press and hold for 1 second at the same time to enter the search TWS mode**

**"PLAY"+"VOL-": Long press at the same time for 1 second to enter the searched TWS mode**

**"VOL+"+"VOL-": Long press at the same time for 1 second to disconnect TWS**

**4. LED light: pairing status, double lights flash alternately; pairing successful, single light flashes**

**5. Always in pairing when there is no connection, no standby**

**6. Control the external power amplifier mute pin MUTE (with sound: output high 3V3, no sound: output 0V)**

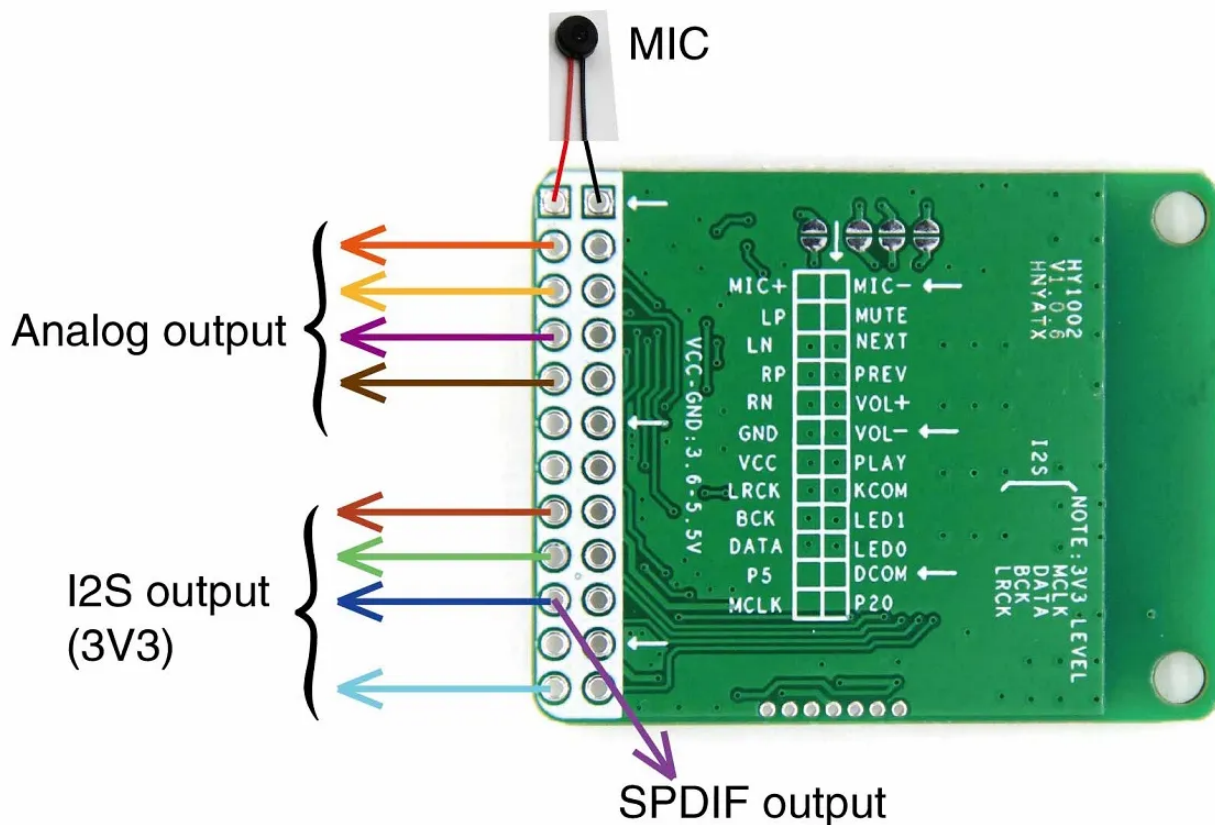
**7. Support AAC, APTX, ATPXHD decoding**

8. Single output with prompt sound, some external DAC does not play prompt sound, but it does not affect playing music; dual output without prompt sound

9. Support Android APP to modify Bluetooth name (support Chinese), pairing password, custom EQ

## Product connection diagram

We are dedicated to you **service**



VCC:3.6-5.5V

**Product picture**

We are dedicated to you **service**

中国移动 6.12K/s 09:46

蓝牙

设备名称 HUAWEI Mate 10 Pro

接收的文件

已配对的设备

QCC3031E aptX HD 已连接用于媒体的音频

QCC3034E

EDIFIER TWS1 经典版

CAR MULTIMEDIA

收起 ^

HYT TOOLS QCC V1.0

BONDED 绑定

QCC3034E 00:02:5B:00:FF:08 DUAL device

EDIFIER TWS1 经典版 5C:C6:E9:38:80:82 BR/EDR device

QCC3031E 00:02:5B:12:0F:0F DUAL device

CAR MULTIMEDIA 94:B2:CC:60:93:10 BR/EDR device

CONNECT SPP SPP连接(快)

CONNECT BLE BLE连接(慢)

HY... DISCONNECT

API 1.2.5 QCC3031E connected - bonded -44 dBm

Equalizer

TWS

Remote

Upgrade

Support/支持

Support/支持

Support/支持

Support/支持

No Support/不支持

中国移动 3.01K/s 14:47

Equalizer

General Settings

Bass boost

3D

Presets

BANK 0 BANK 1 BANK 2

BANK 3 BANK 4 BANK 5

BANK 6

CONFIGURE

中国移动 0.00K/s 14:47

Customize ban...

Master gain -36 dB 12 dB 0 dB

Bands

BA ND 1 BA ND 2 BA ND 3 BA ND 4 BA ND 5

F 20 Hz 20 kHz 79 Hz

Q 0.25 8 3.34

G -36 dB 12 dB 3 dB

Filter type

LPF1 LPF2 APF1 APF2

HPF1 HPF2 LS1 LS2

TILT1 TILT2 HS1 HS2

PEQ

BYPASS

中国移动 128B/s 14:47

Remote control

中国移动 0.00K/s 09:47

Device information

Set Name/设置名称 重启生效

Set Pin/设置密码 重启生效

SET NAME 设置名称

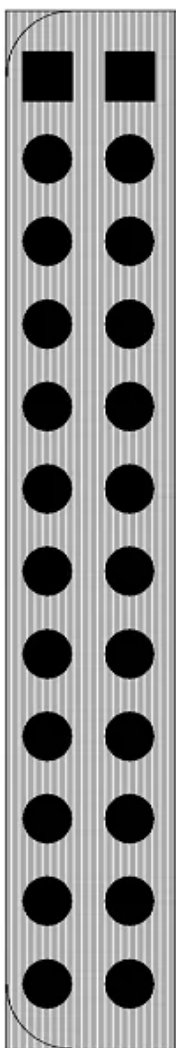
SET PIN 设置密码

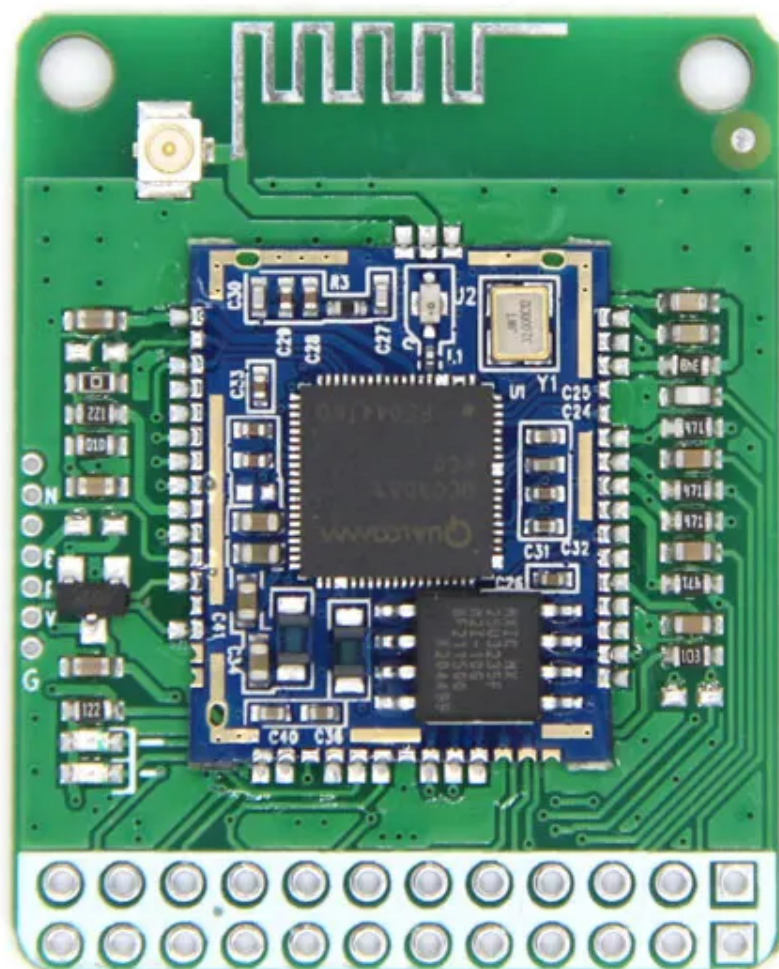
Dev name/名称≤10位中文/31位... QCC3031E

Dev pin/密码≤15位[0000=关闭密... 0000

Dev address/蓝牙地址 00:02:5B:12:0F:0F

REBOOT EFFECT \*\*重启生效\*\*



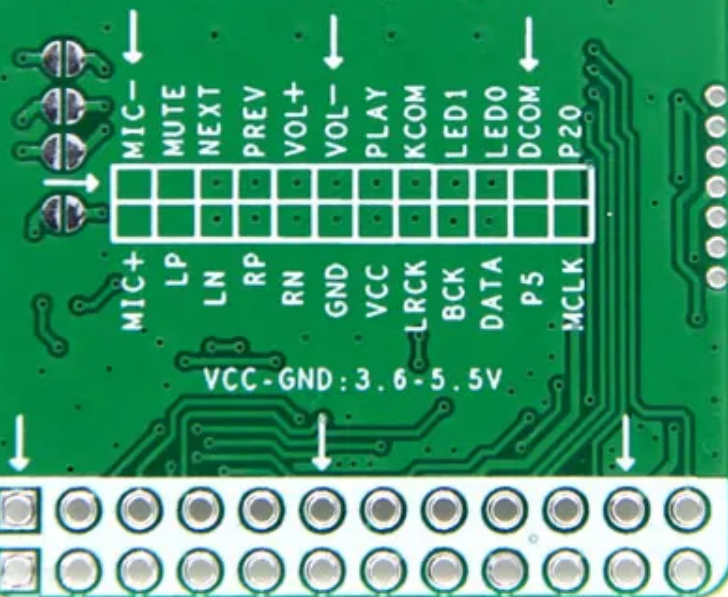




HY1002  
V1.0.6  
HNYATX

I2S

NOTE: 3V3 LEVEL  
MCLK  
DATA  
BCK  
LRCK



VCC-GND: 3.6-5.5V