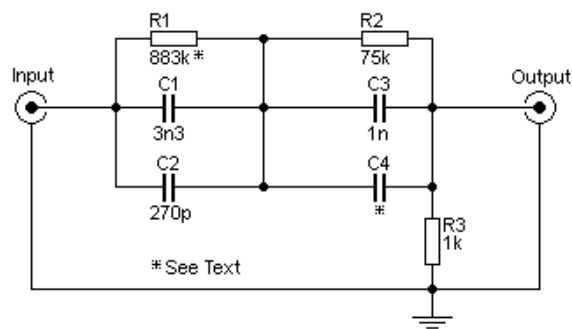
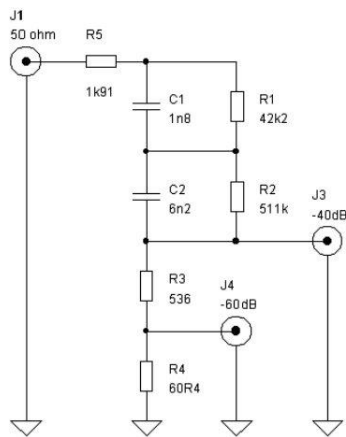


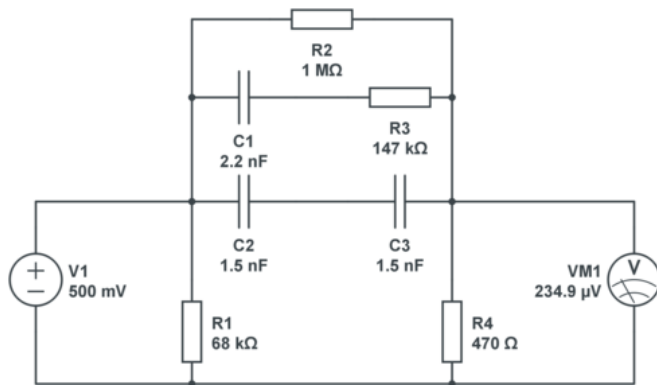
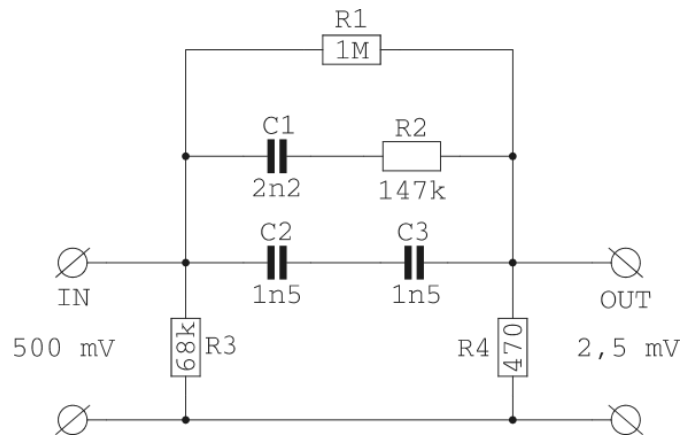
Inverse riaa



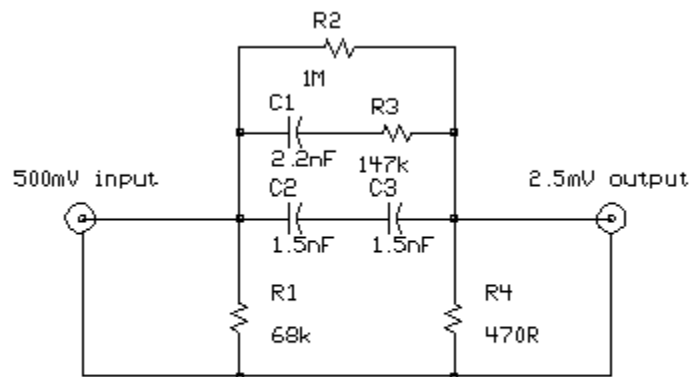
iRIAA2 Inverse Filter

Schematic



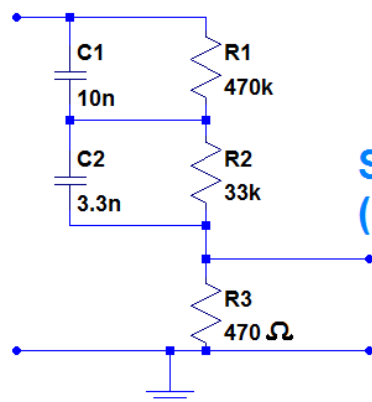


CIRCUIT  LAB andrejdik / Reverse RIAA
<http://circuitlab.com/cd/pbxvu>



Line signal to phono input (MD/MC) converter
Copyright (C) Tomi Engdahl 1995

Entrée
(niveau ligne)



Sortie
(niveau phono)

