

# Mechanical Component Parts

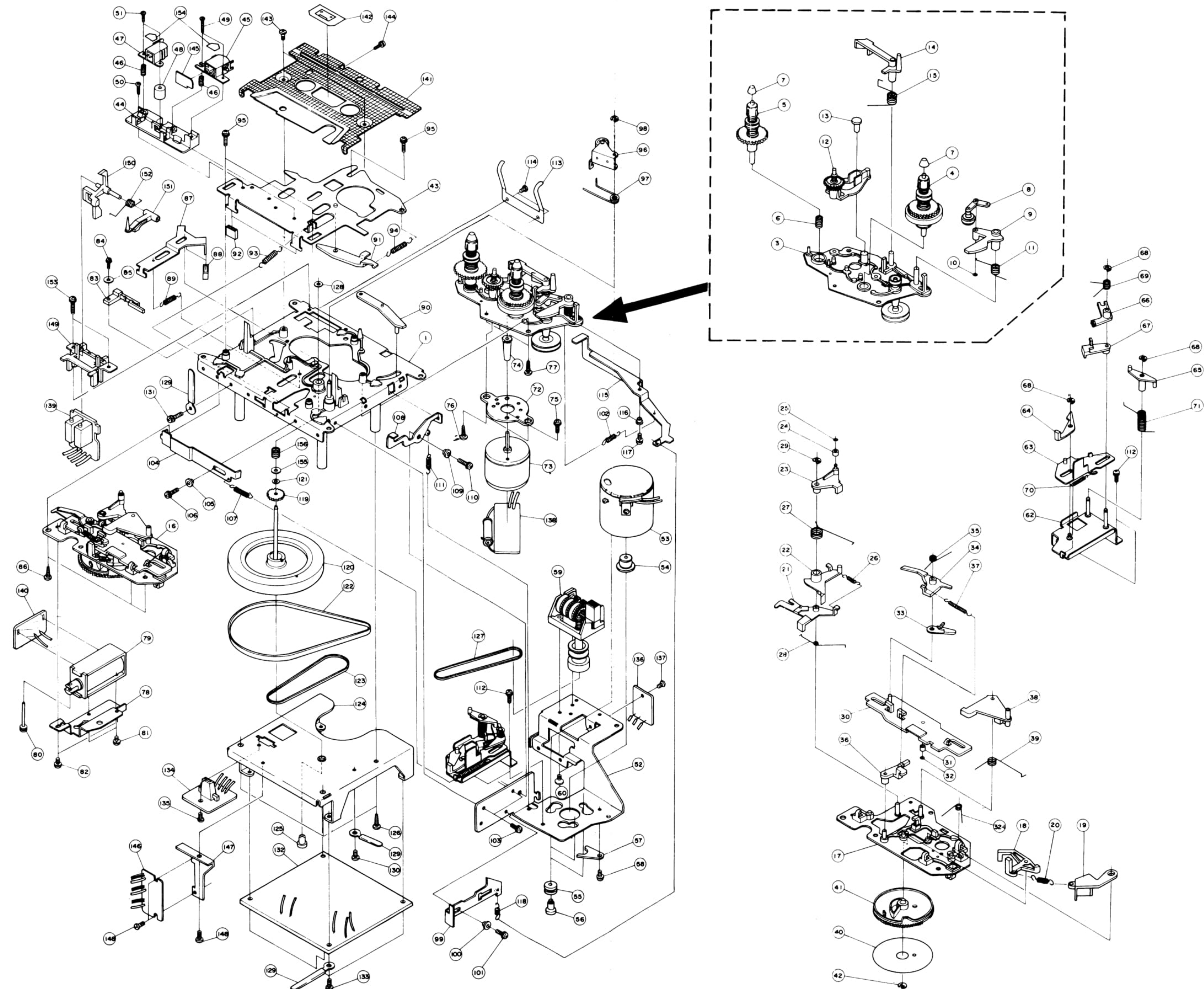


Fig. 34



| Ref. No. | Parts No.    | Parts Name                | Remarks                        | Q'ty |
|----------|--------------|---------------------------|--------------------------------|------|
| 22       | V31131-002   | Handle Supporter          |                                | 2    |
| 23       | V44943-001   | Washer                    | (Left)                         | 1    |
| 24       | V44944-001   | "                         | (Right)                        | 1    |
| 25       | V44883-001   | Bracket                   |                                | 2    |
| 26       | SPSP3014ZS   | Screw                     |                                | 2    |
| 27       | SDSP3018RS   | "                         |                                | 4    |
| 28       | VYH4453-001  | Punching Holder           | (Left)                         | 1    |
| 29       | VYH4453-002  | "                         | (Right)                        | 1    |
| 30       | VJD4351-001  | Punching Panel            |                                | 2    |
| 31       | HSA0599-01J  | Speaker                   | Tweeter Speaker (5cm) 101, 201 | 2    |
| 32       | VYH4352-002  | Clamp                     |                                | 2    |
| 33       | HSA1603-01E  | Speaker                   | Woofer Speaker (16cm) 101, 201 | 2    |
| 34       | QEN21EM-155  | E. Capacitor              | C163, 263                      | 2    |
| 35       | VXQ4031-001  | Eject Lever               | D34                            | 1    |
| 36       | VKY4175-001  | Spring                    |                                | 1    |
| 38       | VYH4454-001  | Bracket                   |                                | 1    |
| 39       | VKW4218-001  | Door Spring               |                                | 1    |
| 40       | VYH4456-001  | Holder                    |                                | 1    |
| 41       | VYH4513-00A  | Damp Ass'y                |                                | 1    |
| 42       | VYH4460-001  | Gear                      |                                | 1    |
| 43       |              |                           | Blank No.                      |      |
| 44       |              | Mecha Button Unit Ass'y   | Refer to page 18               |      |
| 45       | VYH4455-002  | Slider                    | * Eject                        | 1    |
| 46       | SBSF3014Z    | Tap. Screw                |                                | 2    |
| 47       | VYH4027-002  | Tuning Shaft              |                                | 1    |
| 48       | REE4000      | E. Ring                   |                                | 1    |
| 49       | VYH4465-001  | Dial Drum                 |                                | 1    |
| 50       | 50153-3      | Spring                    |                                | 1    |
| 51       | VHR2TK9-05AT | Dial Rope                 | Kevlar 1335 mm                 | 1    |
| 52       | Q03091-138   | Washer                    | Dial Drum                      | 1    |
| 53       | VJN4044-001  | Needle                    |                                | 1    |
| 54       | VMME62N-023  | E.C. Mike                 | MIC101, MIC201                 | 2    |
| 55       | VYH4348-001  | Mic Bushing               |                                | 2    |
| 56       | VMW3110-002  | P.W. Board                | Mic Connector                  | 1    |
| 57       | VMW2146-002B | P.W. Board                | ST Indicator                   | 1    |
| 58       | VGM0620-001  | Indicator                 | METER                          | 1    |
| 59       | VYSR1R5-006  | Spacer                    |                                | 1    |
| 60       | VYH4461-001  | Bracket                   |                                | 1    |
| 61       | V44737-001   | Main Switch (or 6251804T) | Skeleton S902                  | 1    |
| 62       | V31167-002   | Switch Holder             |                                | 1    |
| 63       | SBSA2010N    | Tap. Screw                |                                | 1    |
| 64       | V31169-002   | Toggle Knob               |                                | 1    |
| 65       | V44979-002   | Lever Cap                 | Power                          | 1    |
| 66       | VXL4104-001  | Tuning Knob               |                                | 1    |
| 67       | VXS4032-001  | Slide Knob                | Volume                         | 2    |
| 68       | VXS4033-001  | "                         | Tone                           | 2    |
| 69       | VXP4054-001  | Push Knob                 | Band                           | 5    |
| 70       | VXL4110-001  | Fine Tune Knob            |                                | 1    |
| 71       | VYSH102-023  | Spacer                    |                                | 1    |
| 72       | VMW3119-001  | P.W. Board                |                                | —    |
| 73       | QMV5005-010  | Connector                 |                                | 1    |
| 74       | SBSB3006Z    | Tapping Screw             |                                | 2    |
| 75       | SPSP2606Z    | Screw                     |                                | 2    |
| 76       | QMC0888-008  | DIN Socket                |                                | 1    |
| 77       | VYH4517-002  | Jack Bracket              |                                | 1    |
| 78       | SSSP2608M    | Screw                     |                                | 2    |
| 79       | VKZ4001-007  | Wire Holder               |                                | 7    |
| 80       | SBSF3010Z    | Screw                     |                                | 28   |
| 81       | VXQ4032-001  | Lever Cap                 |                                | 3    |



### Mechanical Component Parts List

| Ref. No. | Parts No.    | Parts Name              | Remarks                 | Q'ty |
|----------|--------------|-------------------------|-------------------------|------|
| 1        | VKL1162-00B  | Chassis Base Ass'y      |                         | 1    |
| 3        | VKL3215-00A  | Reel Disk Bracket Ass'y |                         | 1    |
| 4        | VKR4150-00B  | Reel Disk Ass'y         | Take Up                 | 1    |
| 5        | VKR4158-00B  | "                       | Supply                  | 1    |
| 6        | THIS DWG     | Comp. Spring            | Back Tension            | 1    |
| 7        | VKS4247-001  | Back Tension Base       |                         | 1    |
| 8        | VKR4160-001  | Reel Stopper            |                         | 2    |
| 9        | VKS4240-00A  | Idler Arm Ass't         |                         | 1    |
| 10       | VKS4170-001  | Take up Lever           |                         | 1    |
| 10       | TEP357421-05 | Special Washer          | Take Up Arm             | 1    |
| 11       | VKW4181-001  | Take up Lever Spring    |                         | 1    |
| 12       | VKS4203-00A  | FF. Rew Gear Ass'y      |                         | 1    |
| 13       | VKS4174-001  | Lock Bush               |                         | 1    |
| 14       | VKS4175-001  | Neutral Arm             |                         | 1    |
| 15       | VKW4182-001  | Neutral Arm Spring      |                         | 1    |
| 16       | VKL3217-00B  | Drive Gear Assy Unit    |                         | 1    |
| 17       | VKL3218-00A  | Gear Holder Ass'y       |                         | 1    |
| 18       | VKS4176-001  | Stop Arm                |                         | 1    |
| 19       | VKS4177-001  | Kick Arm                |                         | 1    |
| 20       | VKW3002-046  | Tension Spring          |                         | 1    |
| 21       | VKS4178-001  | Pause Arm (3)           |                         | 1    |
| 22       | VKS4179-001  | " (2)                   |                         | 1    |
| 23       | VKS4180-00A  | " (1) Ass'y             |                         | 1    |
| 24       | VKH3000-031  | Collar                  |                         | 1    |
| 25       | VKZ4004-001  | Special Washer          |                         | 1    |
| 26       | VKW3000-014  | Tension Spring          |                         | 1    |
| 27       | VKW4183-001  | Pause Arm Spring        | Pause Arm (1), (2)      | 1    |
| 28       | VKW4184-001  | "                       | Pause Arm (3)           | 1    |
| 29       | REE 2500     | E. Ring                 |                         | 1    |
| 30       | VKS4182-00B  | Slide Bar Ass'y         |                         | 1    |
| 31       | VKH3000-031  | Collar                  |                         | 1    |
| 32       | VKZ4004-001  | Special Washer          |                         | 1    |
| 32-1     | VKW4185-001  | Slide Bar Spring        |                         | 1    |
| 33       | VKS4184-001  | Play Arm (2)            |                         | 1    |
| 34       | VKS4185-001  | " (3)                   |                         | 1    |
| 35       | VKW4186-001  | Play Arm Spring         |                         | 1    |
| 36       | VKS4186-001  | Brake Arm               |                         | 1    |
| 37       | VKW3002-022  | Tension Spring          | Play Arm (3), Brake Arm | 1    |
| 38       | VKS4187-001  | Play Arm (1)            |                         | 1    |
| 39       | VKW4187-001  | Play Arm (1) Spring     |                         | 1    |
| 40       | VKZ4134-001  | Control Plate           |                         | 1    |
| 41       | VKS3114-001  | Drive Gear              |                         | 1    |
| 42       | REE 2500     | E. Ring                 |                         | 1    |
| 43       | VKL3220-00A  | Slide Base Ass'y        |                         | 1    |
| 44       | VKS2102-001  | Head Mount Base         |                         | 1    |
| 45       | ZMM074401-0D | R.P. Head Ass'y         |                         | 1    |
| 46       | VKW3001-020  | Comp. Spring            |                         | 2    |
| 47       | ZMM09014-0A  | E. Head Ass'y           |                         | 1    |
| 48       | VKH4215-001  | Head Collar             |                         | 1    |
| 49       | SPSX2010N    | Screw                   |                         | 2    |
| 50       | SPSP2008N    | "                       |                         | 1    |
| 51       | SPSX2008N    | "                       |                         | 2    |
| 52       | VKL3222-001  | Motor Bracket           |                         | 1    |
| 53       | MHI-5E2RDPB  | D.C. Motor              |                         | 1    |
| 54       | VKS4188-002  | Motor Pulley            |                         | 1    |
| 55       | VKZ4130-001  | Cushion Rubber          |                         | 3    |
| 56       | VKZ4109-001  | Motor Screw             |                         | 3    |
| 57       | TFB345469-01 | Rubber Stopper          |                         | 1    |
| 58       | LPSP2604Z    | Screw                   |                         | 1    |
| 59       | VKC5131-003S | Tape Counter            |                         | 1    |

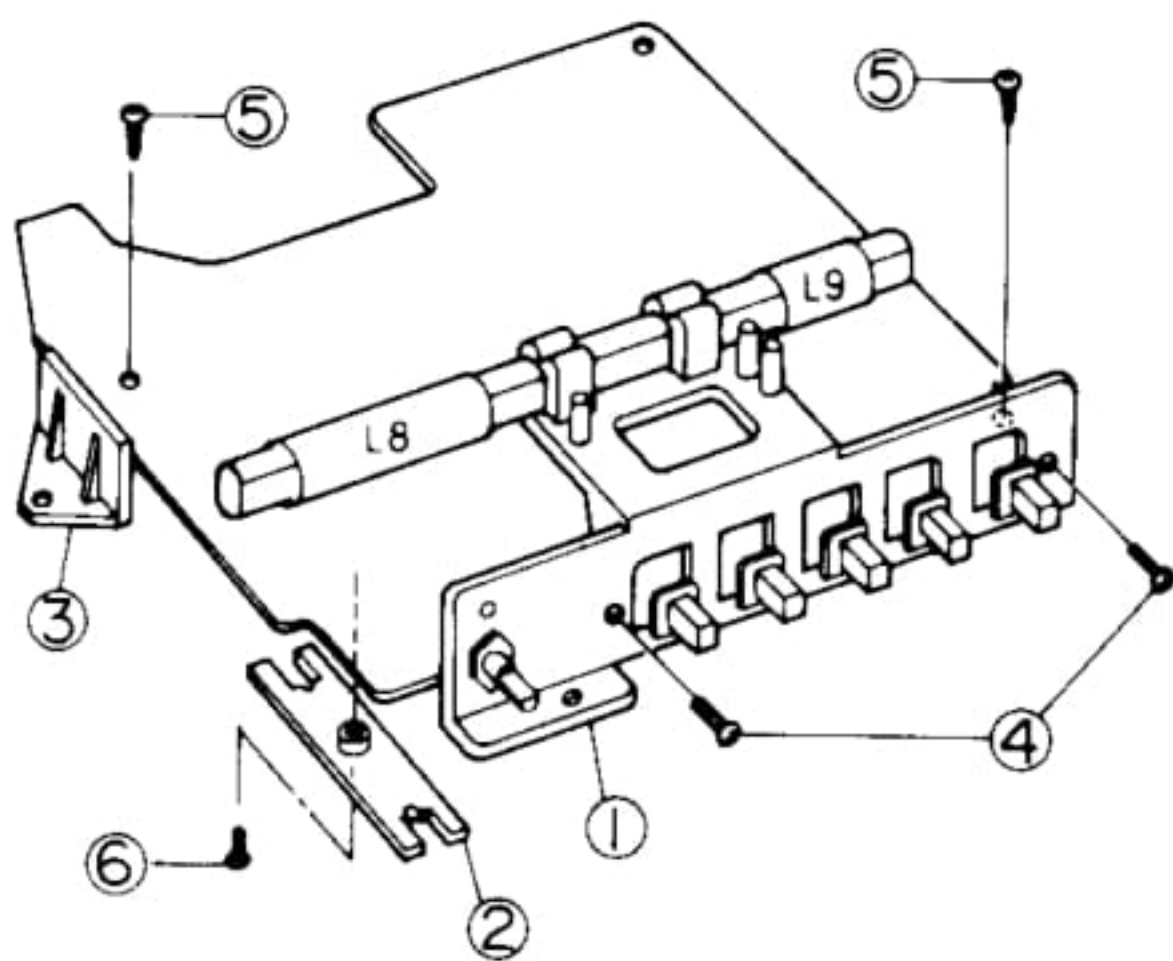
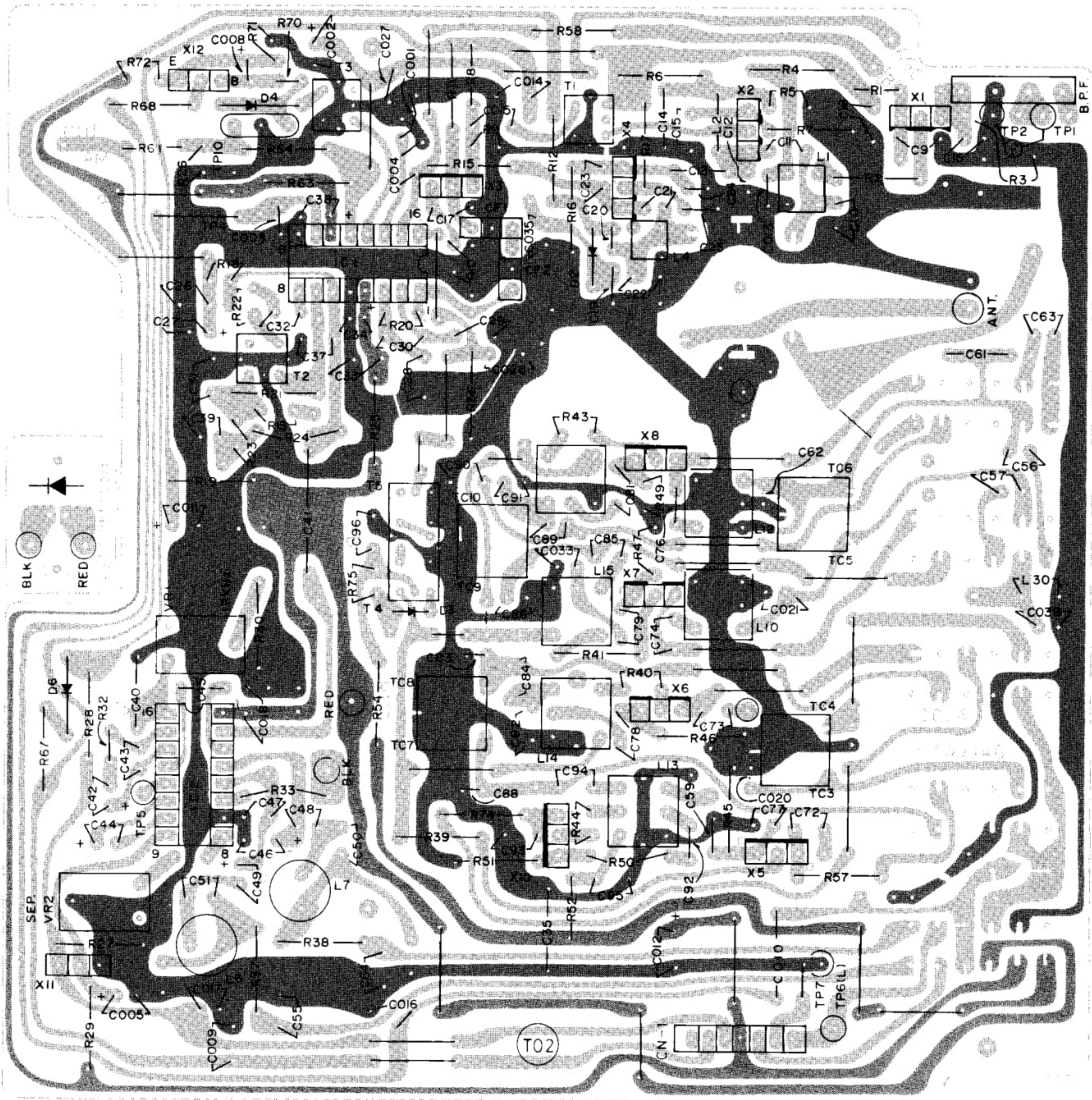


| Ref. No. | Parts No.   | Parts Name             | Remarks                                 | Q'ty |
|----------|-------------|------------------------|-----------------------------------------|------|
| 60       | SSSP3006ZS  | Screw                  |                                         | 2    |
| 61       | VKH4279-001 | Collar                 |                                         | 1    |
| 62       | VKL4655-00A | Eject Bracket Ass'y    |                                         | 1    |
| 63       | VKS4189-001 | Eject Slide Bar        |                                         | 1    |
| 64       | VKS4190-001 | Eject Arm              |                                         | 1    |
| 65       | VKS4191-001 | Safety Arm (1)         |                                         | 1    |
| 66       | VKS4234-001 | " (2)                  |                                         | 1    |
| 67       | VKS4235-001 | " (3)                  |                                         | 1    |
| 68       | REE 2500    | E. Ring                |                                         | 3    |
| 69       | VKW4220-001 | Safety Arm Spring      |                                         | 1    |
| 70       | VKW3002-038 | Tension Spring         |                                         | 1    |
| 71       | VKW4188-001 | Safety Arm Spring      |                                         | 1    |
| 72       | VKL4657-001 | Reel Motor Bracket     |                                         | 1    |
| 73       | MMN-6C2RKP  | Reel Motor             |                                         | 1    |
| 74       | VKS4193-002 | Motor Gear             |                                         | 1    |
| 75       | SPSP2603Z   | Screw                  | Reel Motor                              | 2    |
| 76       | SBSB2608Z   | "                      | Motor Bracket                           | 2    |
| 77       | SBSB2608Z   | "                      | Reel Unit                               | 3    |
| 78       | VKL4658-001 | Solenoid Bracket       |                                         | 1    |
| 79       | VGP0401-001 | D.C. Solenoid          |                                         | 1    |
| 80       | VKH4251-001 | Solenoid Pin           |                                         | 1    |
| 81       | LPSP2604Z   | Screw                  | Solenoid                                | 2    |
| 82       | LPSP2604Z   | "                      | S. Bracket                              | 2    |
| 83       | VSH1108-001 | Reef Switch            |                                         | 1    |
| 84       | LPSP2004Z   | Screw                  |                                         | 1    |
| 85       | WNS2000N    | Washer                 |                                         | 1    |
| 86       | SBSB2608Z   | Screw                  | Gear Ass'y Unit                         | 3    |
| 87       | VKL4659-001 | Brake Bar              |                                         | 1    |
| 88       | VKZ4129-001 | Brake Rubber           |                                         | 2    |
| 89       | VKW3002-054 | Tension Spring         | Brake Bar                               | 1    |
| 90       | VKS4194-00A | Take off Lever Ass'y   |                                         | 1    |
| 91       | VKS4196-002 | Slide Base Arm         |                                         | 1    |
| 92       | T44341-001  | Rubber Tire            |                                         | 2    |
| 93       | VKW3002-042 | Tension Spring         | Slide Base                              | 1    |
| 94       | VKW3002-040 | "                      | Slide Base Arm                          | 1    |
| 95       | DPSP2605Z   | Screw                  | Slide Base                              | 3    |
| 96       | VKP4106-00A | Pinch Roller Arm Ass'y |                                         | 1    |
| 97       | VKW4189-001 | Pinch Roller Spring    |                                         | 1    |
| 98       | REE 2500    | E. Ring                |                                         | 1    |
| 99       | VKL4660-001 | Eject Slide Bar        |                                         | 1    |
| 100      | VKH3001-024 | Flange Collar          |                                         | 1    |
| 101      | LPSP2606Z   | Screw                  | Flange Collar                           | 1    |
| 102      | VKW3002-011 | Tension Screw          | Safety Lever Arm                        | 1    |
| 103      | LPSP2604Z   | Screw                  | Motor Bracket                           | 4    |
| 104      | VKL4661-001 | Stop Slide Bar         |                                         | 1    |
| 105      | VKH3001-024 | Flange Collar          |                                         | 1    |
| 106      | LPSP2606Z   | Screw                  |                                         | 1    |
| 107      | VKW3002-020 | Tension Spring         | Stop Slide Base                         | 1    |
| 108      | VKL4663-001 | Rec. Safety Stopper    |                                         | 1    |
| 109      | VKH3001-024 | Flange Collar          |                                         | 1    |
| 110      | LPSP2606Z   | Screw                  |                                         | 1    |
| 111      | VKW3002-039 | Tension Spring         | Rec. Safety Stopper                     | 1    |
| 112      | LPSP2604Z   | Screw                  | Eject Bracket                           | 2    |
| 113      | VKY4171-001 | Pack Spring            |                                         | 1    |
| 114      | SPSP2603Z   | Screw                  | Pack Spring                             | 2    |
| 115      | VKL4662-001 | Safety Lever Arm       |                                         | 1    |
| 116      | VKH3001-024 | Flange Collar          |                                         | 1    |
| 117      | SPSP2606Z   | Screw                  | Safety Lever Arm                        | 1    |
| 118      | VKW3002-041 | Tension Spring         | Eject Slide Bracket<br>Safety Lever Arm | 1    |

| Ref. No. | Parts No.    | Parts Name                | Remarks                 | Q'ty |
|----------|--------------|---------------------------|-------------------------|------|
| 119      | VKS4199-001  | Flywheel Gear             |                         | 1    |
| 120      | VKF3111-00B  | Flywheel Ass'y            |                         | 1    |
| 121      | Q030903-827  | Washer                    | Thrust                  | 1    |
| 122      | VKB3001-010H | Belt                      | Capstan                 | 1    |
| 123      | VKB3000-017H | "                         | Take up                 | 1    |
| 124      | VKL3223-001  | Flywheel Holder           |                         | 1    |
| 125      | TEP357456-01 | Thrust Bearing            |                         | 1    |
| 126      | SBSB2608Z    | Screw                     | Flywheel Holder         | 3    |
| 127      | VKB3000-020H | Belt                      | Counter                 | 1    |
| 128      | Q03093-522   | Washer                    | Oill Cut                | 1    |
| 129      | VKZ4001-010  | Wire Holder               | Oill Cut                | 3    |
| 130      | SBSB2604Z    | Screw                     |                         | 1    |
| 131      | LPSP2604Z    | "                         |                         | 1    |
| 133      | LPSP2606Z    | Screw                     | Mecha Control           | 4    |
| 134      | —            | Photo Coupler P.W.B.      |                         | —    |
| 135      | LPSP2606Z    | Screw                     | Photo Caplan            | 1    |
| 136      | —            | Hall Element P.W.B.       |                         | —    |
| 137      | LPSP2604Z    | Screw                     | for Hall element P.W.B. | 1    |
| 138      | —            | Reel Motor P.W.B.         |                         | —    |
| 139      | —            | Push Switch P.W.B.        |                         | —    |
| 140      | —            | Solenoid P.W.B.           |                         | —    |
| 141      | VJD4357-001  | Cassette Plate            |                         | 1    |
| 142      | VJD4005-002  | Reflection Plate          |                         | 1    |
| 143      | SDSF2605R    | Screw                     |                         | 2    |
| 144      | LPSP2604Z    | Screw                     |                         | 2    |
| 145      | —            | Head P.W.B.               |                         | —    |
| 146      | —            | Head Wire Terminal P.W.B. |                         | —    |
| 147      | VYH4502-001  | P.W.B. Holder             |                         | 1    |
| 148      | SPSP2606Z    | Screw                     |                         | 3    |
| 149      | VKS3115-001  | Safety Lever Guide        |                         | 1    |
| 150      | VKS4197-001  | Rec. Safety Lever         |                         | 1    |
| 151      | VKS4198-001  | Push Arm                  |                         | 1    |
| 152      | VKW4190-001  | Safety Lever Spring       |                         | 1    |
| 153      | LPSP2604Z    | Screw                     |                         | 1    |
| 154      | THC037417-02 | Head Plate                |                         | 2    |
| 155      | Q03093-628   | Washer                    | Thrust                  | 1    |
| 156      | VKW3001-044  | Compression Spring        | Thrust                  | 1    |



# Tuner P.W. Board Parts



· Voltage values are measured by the circuit tester without input signal at FM mode.  
( ) ; at AM mode.

| IC1 HA11251 |            |    |             |
|-------------|------------|----|-------------|
| 1           | 3.9 (0.5)  | 9  | 0           |
| 2           | 3.9 (0.01) | 10 | 0.05        |
| 3           | 3.9 (0.5)  | 11 | 6.8 (6.6)   |
| 4           | 6.4 (0)    | 12 | 0.74 (0.9)  |
| 5           | 0          | 13 | 0           |
| 6           | 4 (3.8)    | 14 | 3.5 (3.6)   |
| 7           | 4 (4.1)    | 15 | 1.4 (1.4)   |
| 8           | 5.6        | 16 | 0.75 (0.75) |

| IC2 HA11227 |      |    |         |
|-------------|------|----|---------|
| 1           | 6.8  | 9  | 0.7 (0) |
| 2           | 1.2  | 10 | 0.7     |
| 3           | 1.8  | 11 | 1.5     |
| 4           | 1.3  | 12 | 1.1     |
| 5           | 1.3  | 13 | 1.5     |
| 6           | 0    | 14 | 1.5     |
| 7           | 0    | 15 | 1.5     |
| 8           | 0.08 | 16 | 1.9     |

■ +B  
■ earth



## Tuner P.W. Board Parts List

| Ref. No.       | Parts No.    | Parts Name      | Remarks            | Q'ty |
|----------------|--------------|-----------------|--------------------|------|
|                | VMW2146-002A | P.W. Board      | Tuner              | 1    |
|                | VMW3116-001  | "               | Switch             | 1    |
| X1,4           | 2SC1342(B)   | Transistor      |                    | 2    |
| X2             | 2SC535(B)    | "               |                    | 1    |
| X3,5           | 2SC460(C)    | "               |                    | 1    |
| X6,7,8,10      | 2SC460(B)    | "               |                    | 4    |
| X11            | 2SC458(C)    | "               |                    | 1    |
| X12            | 2SA608(E)    | "               |                    | 1    |
| IC1            | HA11251      | IC              |                    | 1    |
| IC2            | AN7410       | "               |                    | 1    |
| D2             | MA345        | Varicap         |                    | 1    |
| D3,6           | IS2473       | Si. Diode       |                    | 2    |
| D4             | IN34A        | Ge. Diode       |                    | 1    |
|                | V44611-001   | Formed Bus Wire |                    | 7    |
|                | V44611-002   | "               |                    | 2    |
|                | V44611-005   | "               |                    | 24   |
|                | VBP3M4E-001  | B.P. Filter     |                    | 1    |
|                | V03059-016   | C. Filter       | CF1,2              | 2    |
|                | 03126-15     | C.R. Block      |                    | 1    |
|                | A74138-2     | Test Pin        |                    | 1    |
|                | VKL3143-001  | Board in Tab    |                    | 10   |
| L1             | VQF1B12-001  | RF Coil         | FM                 | 1    |
| L2             | 03226-1K     | Inductor        |                    | 1    |
| L4             | V03105-029   | RF Coil         | FM                 | 1    |
| L6,7           | VQP0002-393  | Inductor        |                    | 2    |
| L10            | VQR1001-202  | ANT Coil        | SW2                | 1    |
| L12            | VQR1001-207  | "               | SW1                | 1    |
| L13            | VQMIT03-301  | OSC Coil        | MW                 | 1    |
| L14            | 46923-42     | "               | LW                 | 1    |
| L15            | VQS1S02-302  | OSC Coil        | SW2                | 1    |
| L16            | 03160-74     | "               | SW1                | 1    |
| L30            | V03047-21    | Inductor        |                    | 1    |
| T1             | V03068-7     | IFT             |                    | 1    |
| T2             | VQT7F28-101  | "               |                    | 1    |
| T3             | VQT7A11-301  | "               |                    | 1    |
| CFT            | VQT7A32-101  | "               |                    | 1    |
|                | VYH4369-003  | Shield          |                    | 1    |
| VR1            | QVP8A0B-014  | V. Resistor     | 10k $\Omega$       | 1    |
| VR2            | QVP8A0B-054  | "               | 50k $\Omega$       | 1    |
| R1             | QRD143K-334  | C. Resistor     | 330k $\Omega$ 1/4W | 1    |
| R2,19,25,39,41 | QRD141K-101  | "               | 100 $\Omega$ "     | 5    |
| R3             | QRD141K-332  | "               | 3.3k $\Omega$ "    | 1    |
| R4             | QRD141K-471  | "               | 470 $\Omega$ "     | 1    |
| R5,37,38       | QRD141K-682  | "               | 6.8k $\Omega$ "    | 3    |
| R6,28,29       | QRD141K-273  | "               | 27k $\Omega$ "     | 3    |
| R7,45,46,51    | QRD141K-102  | "               | 1k $\Omega$ "      | 4    |
| R8             | QRD143K-273  | "               | 27k $\Omega$ "     | 1    |
| R9             | QRD143K-682  | "               | 6.8k $\Omega$ "    | 1    |
| R10            | QRD143K-821  | "               | 820 $\Omega$ "     | 1    |
| R11, 54        | QRD141K-331  | "               | 330 $\Omega$ "     | 2    |
| R12            | QRD141K-104  | "               | 100k $\Omega$ "    | 1    |
| R13            | QRD143K-224  | "               | 220k $\Omega$ "    | 1    |
| R15,60,74      | QRD141K-153  | "               | 15k $\Omega$ "     | 3    |
| R16            | QRD141K-561  | "               | 560 $\Omega$ "     | 1    |
| R17            | QRD141K-222  | "               | 2.2k $\Omega$ "    | 1    |
| R18            | QRD143K-683  | "               | 68k $\Omega$ "     | 1    |
| R20,52         | QRD143K-331  | "               | 330 $\Omega$ "     | 2    |
| R21,57,58      | QRD141K-562  | "               | 5.6k $\Omega$ "    | 3    |
| R22,71         | QRD143K-391  | "               | 390 $\Omega$ "     | 2    |
| R23,30         | QRD141K-223  | "               | 22k $\Omega$ "     | 2    |
| R24            | QRD141K-272  | C. Resistor     | 2.7k $\Omega$ "    | 1    |



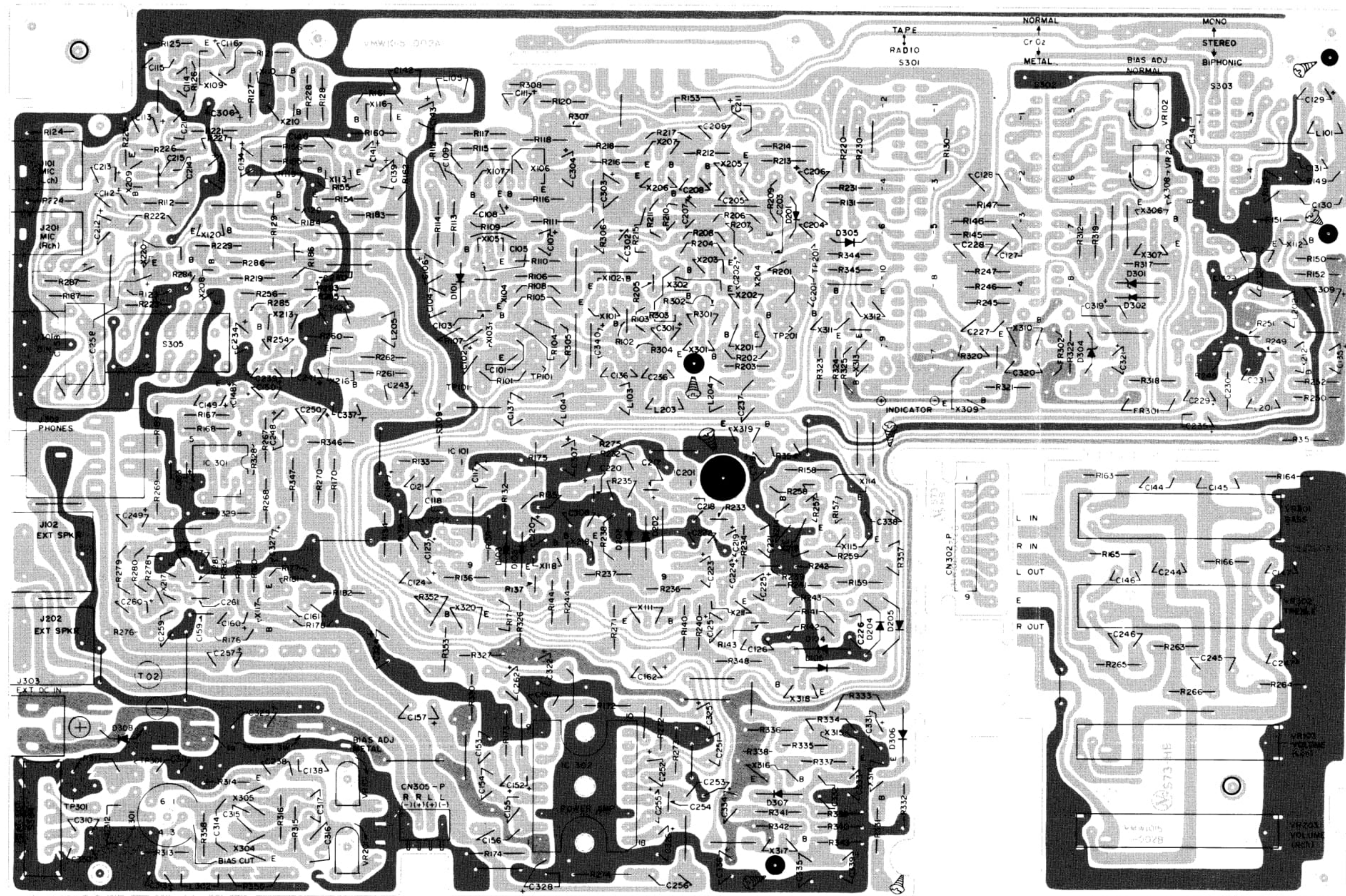
| Ref. No.                            | Parts No.   | Parts Name      | Remarks      | Q'ty |
|-------------------------------------|-------------|-----------------|--------------|------|
| R26                                 | QRD141K-820 | C. Resistor     | 82Ω 1/4W     | 1    |
| R27,56                              | QRD141K-473 | "               | 47kΩ "       | 2    |
| R32,47                              | QRD143K-102 | "               | 1kΩ "        | 2    |
| R33,68                              | QRD141K-681 | "               | 680Ω "       | 2    |
| R40,43,44                           | QRD143K-101 | "               | 100Ω "       | 3    |
| R42,49,77                           | QRD143K-152 | "               | 1.5kΩ "      | 3    |
| R50                                 | QRD141K-470 | "               | 47Ω "        | 1    |
| R59                                 | QRD143K-154 | "               | 150kΩ "      | 1    |
| R61                                 | QRD143K-103 | "               | 10kΩ "       | 1    |
| R63                                 | QRD141K-154 | "               | 150kΩ "      | 1    |
| R64                                 | QRD141K-393 | "               | 39kΩ "       | 1    |
| R67                                 | QRD141K-392 | "               | 3.9kΩ "      | 1    |
| R70,75                              | QRD143K-333 | "               | 33kΩ "       | 2    |
| R72                                 | QRD143K-472 | "               | 4.7kΩ "      | 1    |
| C9,25,013,015                       | QCF11HP-472 | C. Capacitor    | 0.0047μF 50V | 4    |
| C10                                 | QCT05CH-200 | "               | 20pF 16V     | 1    |
| C11,13,86                           | QCS11HJ-4R0 | "               | 4pF 50V      | 3    |
| C12,16                              | QCS11HJ-180 | "               | 18pF "       | 2    |
| C14                                 | QFS21HJ-361 | P. Capacitor    | 360pF "      | 1    |
| C15,17,19,26,33,59<br>93,96,004,018 | QCF11EZ-223 | C. Capacitor    | 0.022μF 25V  | 10   |
| C18,95,014                          | QFM41HM-223 | Mylar Capacitor | 0.022μF 50V  | 3    |
| C20,21                              | QCT05CH-7R0 | C. Capacitor    | 7pF 16V      | 2    |
| C22                                 | QCT05CH-220 | "               | 22pF "       | 1    |
| C23,67,033,<br>C24,91               | QCS11HJ-100 | "               | 10pF 50V     | 3    |
|                                     | QCT05CH-100 | "               | 10pF 16V     | 2    |
| C27,48,49                           | QET41HR-474 | E. Capacitor    | 0.47μF 50V   | 3    |
| C28,29,30,45                        | QFM41HM-473 | Mylar Capacitor | 0.047μF "    | 4    |
| C31,32,73                           | QCF11EZ-103 | C. Capacitor    | 0.01μF 25V   | 3    |
| C34,009                             | QET41AR-476 | E. Capacitor    | 47μF 10V     | 2    |
| C35                                 | QCS11HJ-101 | C. Capacitor    | 100pF 50V    | 1    |
| C36,027                             | QFM41HM-333 | Mylar Capacitor | 0.033μF 50V  | 2    |
| C37                                 | QCS11HJ-361 | C. capacitor    | 360pF 50V    | 1    |
| C38                                 | QET41AR-227 | E. Capacitor    | 220μF 10V    | 1    |
| C39,005                             | QET41CR-106 | "               | 10μF 16V     | 2    |
| C40                                 | QFS21HJ-391 | "               | 390pF 50V    | 1    |
| C41                                 | QEW21EA-475 | "               | 4.7μF 25V    | 1    |
| C42                                 | QEC41HM-474 | "               | 0.47μF 50V   | 1    |
| C43                                 | QEC41HM-224 | "               | 0.22μF 50V   | 1    |
| C44,008                             | QET41HR-105 | "               | 1μF 50V      | 2    |
| C46,47                              | QFM41HK-103 | Mylar Capacitor | 0.01μF 50V   | 2    |
| C50,51                              | QCY41HK-182 | C. Capacitor    | 0.0018μF 50V | 2    |
| C54,55,72,74,76                     | QCY41HK-222 | "               | 0.0022μF "   | 5    |
| C56,83                              | QCS11HJ-300 | "               | 30pF "       | 2    |
| C57,90                              | QCS11HJ-120 | "               | 12pF "       | 2    |
| C60                                 | QCS11HJ-330 | "               | 33pF "       | 1    |
| C61,66                              | QCS11HJ-200 | "               | 20pF "       | 2    |
| C62,88                              | QCS11HJ-7R0 | "               | 7pF "        | 2    |
| C77                                 | QEB41HM-105 | E. Capacitor    | 1μF "        | 1    |
| C78,79                              | QCY41HK-682 | C. Capacitor    | 0.0068μF "   | 2    |
| C81,92,016                          | QCY41HK-472 | C. Capacitor    | 0.0047μF 50V | 3    |
| C82                                 | QCS11HJ-390 | "               | 39pF "       | 1    |
| C84                                 | QFS41HJ-181 | P. Capacitor    | 180pF "      | 1    |
| C85                                 | QFS41HJ-392 | "               | 0.0039μF "   | 1    |
| C89                                 | QCT05CH-150 | C. Capacitor    | 15pF         | 1    |



| Part No.               | Parts No.    | Parts Name          | Remarks    | Q'ty |
|------------------------|--------------|---------------------|------------|------|
| C94                    | QFS41HJ-361  | P. Capacitor        | 360pF "    | 1    |
| C001                   | QCC11EM-104  | C. Capacitor        | 0.1μF 25V  | 1    |
| C002,017               | QET41HR-335  | E. Capacitor        | 3.3μF 50V  | 2    |
| C003                   | QCS11HJ-151  | C. Capacitor        | 150pF 50V  | 1    |
| C010                   | QFM41HM-683  | Mylar Capacitor     | 0.068μF "  | 1    |
| C011                   | QET41AR-107  | E. Capacitor        | 100μF 10V  | 1    |
| C012                   | QET41AR-108  | "                   | 1000μF "   | 1    |
| C020                   | QCS11HJ-2R0  | C. Capacitor        | 2pF 50V    | 1    |
| C028                   | QFS41HJ-152  | P. Capacitor        | 0.0015μF " | 1    |
| C029                   | QCS11HJ-3R0  | C. Capacitor        | 3pF "      | 1    |
| C036                   | QCS11HJ-8R0  | "                   | 8pF "      | 1    |
| VC1...4                | QAP1224-511V | V. Capacitor        |            | 1    |
| TC1...2                |              |                     |            |      |
| TC3,4,5,6,<br>7,8,9,10 | QAT2002-001  | T. Capacitor        |            | 4    |
| S1...5                 | QSP0250-011  | Push Switch         |            | 1    |
| CN3-P                  | QMV5005-007  | Connector           |            | 1    |
|                        | VMW2146-002  | P.W. Board          | for Tuner  |      |
|                        | VMW2146-002A | "                   | for Main   | 1    |
|                        | VMW2146-002B | "                   | for LED    | 1    |
|                        | VQB016B-302  | Bar Antenna         |            | 1    |
|                        | QAT5001-201  | Midget V. Capacitor | VC5        | 1    |
| ①                      | VYH2119-002  | Bar Ant Holder      |            | 1    |
| ②                      | VYH4221-001  | Arm                 |            | 1    |
| ③                      | VYH4028-001  | Bridge              |            | 1    |
| ④                      | SPSP3006ZS   | Screw               |            | 2    |
| ⑤                      | SBSF3010Z    | Tap Screw           |            | 2    |
| ⑥                      | SDSP2606Z    | Screw               |            | 1    |



Amp and VR P.W. Board Parts

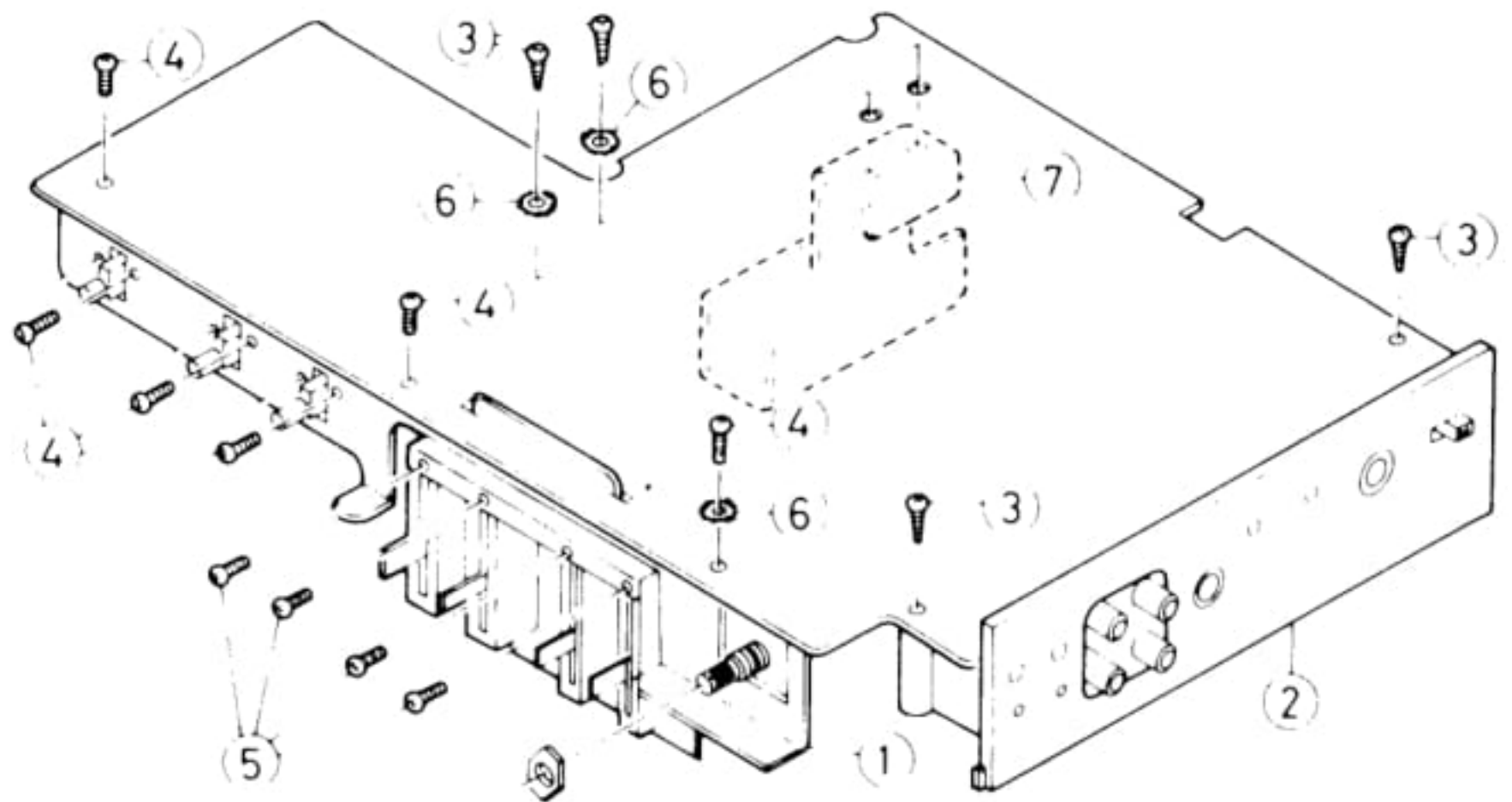


| IC101   | BA333 (V) |
|---------|-----------|
| Pin No. | REC Amp.  |
| 1       | 6.4 [V]   |
| 2       | 0.26      |
| 3       | 0.61      |
| 4       | 0.13      |
| 5       | 0         |
| 6       | 0         |
| 7       | 0.74      |
| 8       | 3.0       |
| 9       | 7.0       |

| IC301   | μPC4557 (C)    |
|---------|----------------|
| Pin No. | Headphone Amp. |
| 1       | 4.5 [V]        |
| 2       | 0.29           |
| 3       | 4.4            |
| 4       | 0              |
| 5       | 4.4            |
| 6       | 0.29           |
| 7       | 4.5            |
| 8       | 9.0            |

| IC302   | AN7146 (H) |
|---------|------------|
| Pin No. | Power Amp. |
| 1       | 12 [V]     |
| 2       | 6.2        |
| 3       | 0          |
| 4       | 11.0       |
| 5       | 1.3        |
| 6       | 3.1        |
| 7       | 1.7        |
| 8       | 0.16       |
| 9       | 0          |

| IC302   | AN7146 (H) |
|---------|------------|
| Pin No. | Power Amp. |
| 10      | 3.1 [V]    |
| 11      | 0.5        |
| 12      | 1.7        |
| 13      | 3.1        |
| 14      | 1.3        |
| 15      | 11.0       |
| 16      | 0          |
| 17      | 6.3        |
| 18      | 11.7       |



| Ref. No. | Function    | Parts No.    | Playback mode (V) |      |      | Recording mode (V) |       |       | Ref. No. | Function    | Parts No.    | Playback mode (V) |      |      | Recording mode (V) |      |      |
|----------|-------------|--------------|-------------------|------|------|--------------------|-------|-------|----------|-------------|--------------|-------------------|------|------|--------------------|------|------|
|          |             |              | E                 | C    | B    | E                  | C     | B     |          |             |              | E                 | C    | B    | E                  | C    | B    |
| X101     | Switching   | 2SD958(T, U) | 0                 | 0    | 0.7  | -5.4               | 0     | -10.8 | X304     | Bias OSC    | 2SD468(C)    | 0                 | 0    | 0    | 0.13               | 4.5  | 0.28 |
| X102     | "           | "            | 0                 | 0    | 0.7  | -5.4               | 0     | -10.4 | X305     | "           | "            | 0                 | 0    | 0    | 0.13               | 4.5  | 0.25 |
| X103     | "           | 2SD636(S)    | 0                 | 0    | 0    | 0                  | 0     | 0.72  | X306     | Regulator   | 2SD468(B)    | 0                 | 12.0 | 0    | 7.0                | 11.9 | 7.6  |
| X104     | PB EQ amp.  | 2SD661(S)    | 0.02              | 0.71 | 0.56 | 0.04               | 0.82  | 0.58  | X307     | Switching   | 2SD636(R, S) | 0                 | 12.0 | 0    | 7.6                | 11.9 | 8.2  |
| X105     | "           | "            | 0.28              | 5.4  | 0.71 | 0.39               | 7.8   | 0.82  | X308     | "           | "            | 0                 | 0    | 0.73 | 0                  | 8.2  | 0    |
| X106     | Switching   | 2SD636(R, S) | 0                 | 0.46 | 0    | 0                  | 0     | 0.5   | X309     | "           | 2SD468(C)    | 0                 | 0    | 0.67 | 0                  | 1.25 | 0    |
| X107     | PB Pri amp. | 2SD636(R)    | 0.26              | 2.5  | 0.46 | 0                  | 9.0   | 0     | X310     | Regulator   | 2SD468(B)    | 6.7               | 12.0 | 7.4  | 6.7                | 11.9 | 7.4  |
| X108     | Muting      | 2SD636(R, S) | 0                 | 0    | 0.63 | 0                  | 0     | 0.63  | X311     | Switching   | 2SD636(R, S) | 0.05              | 0.06 | 0.08 | 0                  | 0    | 0    |
| X109     | Mic Amp.    | 2SD636(S)    | 0.09              | 1.7  | 0.1  | 0.09               | 1.7   | 0.11  | X312     | "           | "            | 0                 | 0.06 | 0    | 0                  | 0    | 0.62 |
| X110     | Switching   | 2SD636(R, S) | 0                 | 0    | 0.72 | 0                  | 0     | 0     | X313     | "           | "            | 0.2               | 0.26 | 0.08 | 0                  | 9.2  | 0    |
| X111     | "           | 2SD636(S)    | 0                 | 0.18 | 0    | 0.94               | 0.94  | 1.6   | X314     | "           | 2SD636(R)    | 0                 | 0.82 | 0    | 0                  | 0    | 0.68 |
| X112     | REC EQ amp. | 2SD636(T)    | 0.61              | 4.6  | 0.28 | 0.56               | 4.4   | 0.26  | X315     | "           | 2SD636(R, S) | 0                 | 0    | 0.57 | 0                  | 5.5  | 0.04 |
| X113     | Muting      | 2SD636(R, S) | 0                 | 0    | 0.62 | 0                  | 0     | 0.62  | X316     | "           | 2SB641(R, S) | 7.3               | 7.2  | 6.6  | 7.4                | 0    | 6.9  |
| X114     | "           | "            | 0                 | 0    | 0.66 | 0                  | 0     | 0     | X317     | "           | "            | 7.3               | 0    | 6.2  | 7.4                | 7.3  | 6.7  |
| X115     | "           | "            | 0                 | 0    | 0.62 | 0                  | 0     | 0     | X318     | "           | 2SD636(R, S) | 0.2               | 0    | 0    | 0                  | 0    | 0.08 |
| X116     | LINE Amp.   | 2SD636(S)    | 0.29              | 4.2  | 0.3  | 0.32               | 4.6   | 0.33  | X319     | Muting      | "            | 0                 | 0.04 | 0    | 0                  | 0.05 | 0.02 |
| X117     | Biphonic    | "            | 2.1               | 7.0  | 2.4  | 2.25               | 7.2   | 2.55  | X320     | "           | "            | 0.54              | 0.54 | 1.2  | 2.8                | 2.8  | 3.4  |
| X118     | Metal ARL   | 2SD636(R, S) | 0                 | 0.28 | 0    | 0                  | 0     | 0.61  | X321     | Switching   | 2SD636(R)    | 0                 | 5.0  | 0.58 | 0                  | 5.6  | 0    |
| X119     | Switching   | 2SD468(C)    | 0                 | 0    | 0.66 | 0                  | 0     | 0.66  | X401     | Mixing Amp. | "            | 0.1               | 1.57 | 0.13 | 0.14               | 2.0  | 0.18 |
| X301     | Switching   | 2SB788(T, U) | 4.3               | 4.2  | 3.5  | 9.3                | -10.6 | 9.2   | X402     | Switching   | 2SD636(R, S) | 0                 | 0    | 0    | 0                  | 0    | 0.62 |
| X302     | "           | 2SD636(R, S) | 0                 | 0.04 | 0.63 | 0                  | 9.0   | 0     | X403     | Mixing Amp. | 2SD636(R)    | 0.14              | 2.25 | 0.1  | 0.15               | 3.2  | 0.2  |
| X303     | Muting      | 2SD636(S)    | 0                 | 0    | 0.72 | 0                  | 0     | 0     | X404     | "           | "            | 0.09              | 2.4  | 0.13 | 2.14               | 3.7  | 0.19 |

- Voltage values are measured by circuit tester (impedance = 20kΩ/V) without input signal at normal tape select position.
- Transistors voltage for muting show at muting operation.
- IC101 BA333 (V) voltage show at recording mode.

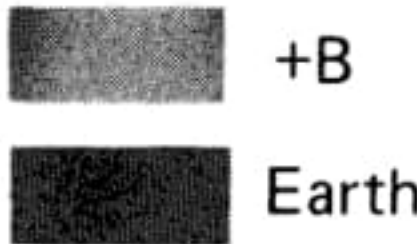


Fig. 36



## Amp and VR P.W. Board Parts List

| Ref. No.     | Parts No.    | Parts Name      | Remarks       | Q'ty |
|--------------|--------------|-----------------|---------------|------|
| S301-1~10    | VMW1015-002A | P.W.Board       | for Main      | 1    |
| S302-1~8     | QSLA210-001  | Lever Switch    | RADIO-TAPE    | 1    |
| S303-1~4     | QSL8310-102  | "               | TAPE-SELECT   | 1    |
| S304         | QSL4310-014  | "               | MONO-ST       | 1    |
| S305-1~4     | QSS1301-001  | Slide Switch    | BEAT CUT      | 1    |
| J101,201     | QSP4210-061  | Push Switch     |               | 1    |
| J102,202     | QMS3501-014  | Jack            | MIC           | 2    |
| J301         | QMC0289-003  | DIN SP Socket   | EXT SP        | 2    |
| J302         | QMC9014-006  | DIN Jack        |               | 1    |
| J303         | QMS6312-004  | Headphone Jack  |               | 1    |
| L101,201     | QMA1221-004  | DC Jack         |               | 1    |
| L105,205     | VQP0001-183S | Inductor        |               | 4    |
| L102,202     | VQP0001-562S | "               |               | 2    |
| L103,203     | VQP0001-103S | "               |               | 4    |
| L104,204     |              |                 |               |      |
| L301         | VQH1009-007  | OSC Coil        |               | 1    |
| L302         | 03226-2K     | Inductor        |               | 1    |
| VR101,201    | QVP8AOB-054  | V. Resistor     | BIAS ADJ 50KΩ | 2    |
| VR102,202    | QVP8AOB-025  | "               | 200KΩ         | 2    |
| VR103,203    | QVR0A6A-054A | "               | VOLUME, 50KΩ  | 2    |
| VR301,302    | QVR2A6A-115  | "               | TONE 100KΩ    | 2    |
| IC101,201    | BA333(V)     | IC              |               | 2    |
| IC301        | μPC4557(C)   | "               |               | 1    |
| IC302        | AN7146(H)    | "               |               | 1    |
| X101,201     | 2SD958(T,U)  | Transistor      |               | 4    |
| X102,202     |              |                 |               |      |
| X103,203,109 | 2SD636(S)    | "               |               | 12   |
| X209,111,211 |              |                 |               |      |
| X116,216,117 |              |                 |               |      |
| X217,113,213 |              |                 |               |      |
| X104,204     | 2SD661(S)    | "               |               | 2    |
| X105,205     | 2SD661(S,T)  | Transistor      |               | 2    |
| X106,206,108 | 2SD636(R,S)  | "               |               | 23   |
| X208,110,210 |              |                 |               |      |
| X120,220,114 |              |                 |               |      |
| X214,115,215 |              |                 |               |      |
| X118,218,302 |              |                 |               |      |
| X308,311,312 |              |                 |               |      |
| X313,315,318 |              |                 |               |      |
| X319,320     |              |                 |               |      |
| X107,207     | 2SD636(R)    | "               |               | 4    |
| X307,314     |              |                 |               |      |
| X112,212     | 2SD636(T)    | "               |               | 2    |
| X301         | 2SB788(T,U)  | "               |               | 1    |
| X304,305,309 | 2SD468(C)    | "               |               | 3    |
| X306,310     | 2SD468(B)    | "               |               | 2    |
| X316,317     | 2SB641(R,S)  | "               |               | 2    |
| D101,201,102 | MA150        | Si. Diode       |               | 9    |
| D202,103,203 |              |                 |               |      |
| D302,305,307 |              |                 |               |      |
| D104,204,105 | OA90         | Ge. Diode       |               | 5    |
| D205,306     |              |                 |               |      |
| D301         | HZ7C2        | Zener Diode     |               | 1    |
| D304         | HZ7C1        | "               |               | 1    |
| D308         | 10EI         | Si. Diode       |               | 1    |
|              | V44611-001   | Formed Bus Wire |               | 2    |
|              | V44611-002   | "               |               | 5    |
|              | V44611-003   | "               |               | 2    |

| Ref. No.         | Parts No.     | Parts Name | Remarks   | Q'ty |
|------------------|---------------|------------|-----------|------|
|                  | V44611-005    | "          |           | 3    |
|                  | V44611-006    | "          |           | 15   |
|                  | QWY123-022    | Bus Wire   |           | 31   |
| R101,201         | QRD141J-100SY | C.Resistor | 10Ω 1/4W  | 2    |
| R102             | QRD143J-392S  | "          | 3.9KΩ     | 1    |
| R103,143         | QRD143J-182S  | "          | 1.8KΩ     | 2    |
| R104,354         | QRD143J-223S  | "          | 22KΩ      | 2    |
| R105,110,219     | QRD141J-472SY | "          | 4.7KΩ     | 18   |
| 121,221,127      |               |            |           |      |
| 128,228,129      |               |            |           |      |
| 229,165,265      |               |            |           |      |
| 158,258,159      |               |            |           |      |
| 259,318,321      |               |            |           |      |
| R106,206,123     | QRD141J-331SY | "          | 330Ω      | 7    |
| R223,303,322     |               |            |           |      |
| R333             |               |            |           |      |
| R107,207         | QRD143J-824S  | "          | 820KΩ     | 2    |
| R108,208,120     | QRD141J-683SY | "          | 68KΩ      | 7    |
| R220,154,325     |               |            |           |      |
| R337             |               |            |           |      |
| R109,209         | QRD141J-471SY | "          | 470Ω      | 4    |
| R173,273         |               |            |           |      |
| R111,163,263     | QRD141J-103SY | "          | 10KΩ      | 3    |
| R112,212,115     | QRD141J-334SY | "          | 330KΩ     | 7    |
| R117,217,141     |               |            |           |      |
| R241             |               |            |           |      |
| R113,213,114     | QRD141J-822SY | "          | 8.2KΩ     | 7    |
| R214,139,176     |               |            |           |      |
| R276             |               |            |           |      |
| R116,216,125     | QRD141J-221SY | "          | 220Ω      | 7    |
| R225,155,255     |               |            |           |      |
| R308             |               |            |           |      |
| R118,218,151,317 | QRD141J332SY  | "          | 3.3KΩ     | 4    |
| R122,222         | QRD141J-222SY | "          | 2.2KΩ     | 5    |
| R124,224,358     |               |            |           |      |
| R126,226         | QRD141J-105SY | "          | 1MΩ       | 5    |
| R187,287,323     |               |            |           |      |
| R130,230,142     | QRD141J-104SY | "          | 100KΩ     | 9    |
| R242,149,286     |               |            |           |      |
| R334,341,184     |               |            |           |      |
| R131,231,136     | QRD141J-272SY | "          | 2.7KΩ     | 7    |
| R236,162,262     |               |            |           |      |
| R271             |               |            |           |      |
| R132,232,140     | QRD141J-333SY | "          | 33KΩ      | 6    |
| R240,145,245     |               |            |           |      |
| R133,351         | QRD141J-101SY | "          | 100Ω      | 2    |
| R134,234,        | QRD141J-153SY | "          | 15KΩ      | 2    |
| R135,235         | QRD121J-106   | "          | 10MΩ 1/2W | 2    |
| R137             | QRD143J-123S  | "          | 12KΩ 1/4W | 1    |
| R138,238         | QRD141J-563SY | "          | 56KΩ      | 4    |
| R147,247         |               |            |           |      |
| R144             | QRD147J-473S  | "          | 47KΩ      | 1    |
| R146,246,172     | QRD141J-473SY | "          | 47KΩ      | 9    |
| R272,244,335     |               |            |           |      |
| R338,342,344     |               |            |           |      |
| R148,248,304     | QRD143J-153S  | "          | 15KΩ      | 3    |
| R150,250,156     | QRD141J-474SY | "          | 470KΩ     | 5    |
| R256,185         |               |            |           |      |



| Ref. No.                                   | Parts No.     | Parts Name       | Remarks            | Q'ty |
|--------------------------------------------|---------------|------------------|--------------------|------|
| R152,252,153<br>253,178,278<br>182,282,237 | QRD141J-123SY | C.Resistor       | 12K $\Omega$ 1/4W  | 9    |
| R157,257                                   | QRD143J-331S  | "                | 330 $\Omega$ "     | 2    |
| R160,260                                   | QRD141J-181SY | "                | 180 $\Omega$ "     | 2    |
| R161,261<br>168,268                        | QRD141J-684SY | "                | 680K $\Omega$ "    | 4    |
| R164,264,202                               | QRD141J-392SY | "                | 3.9K $\Omega$ "    | 3    |
| R166,266,183<br>283,328,329<br>331         | QRD141J-562SY | "                | 5.6K $\Omega$ "    | 7    |
| R167,267<br>315,316                        | QRD141J-183SY | "                | 18K $\Omega$ "     | 4    |
| R169,269                                   | QRD141J-330SY | "                | 33 $\Omega$ "      | 2    |
| R170,270                                   | QRD141J-102SY | "                | 1K $\Omega$ "      | 2    |
| R171                                       | QRD143J-272S  | "                | 2.7K $\Omega$ "    | 1    |
| R174,274                                   | QRD121J-2R2   | "                | 2.2 $\Omega$ 1/2W  | 2    |
| R175                                       | QRD143J-154S  | "                | 150K $\Omega$ 1/4W | 1    |
| R177,180<br>280,345                        | QRD141J-122SY | "                | 1.2K $\Omega$ "    | 4    |
| R179,279                                   | QRD141J-273SY | "                | 27K $\Omega$ "     | 2    |
| R181,281,320                               | QRD143J-562S  | "                | 5.6K $\Omega$ "    | 3    |
| R284,186<br>249                            | QRD143J-104S  | "                | 100K $\Omega$ "    | 3    |
| R203,243                                   | QRD141J-182SY | "                | 1.8K $\Omega$ "    | 2    |
| R204,332,339<br>340,343                    | QRD141J-223SY | "                | 22K $\Omega$ "     | 5    |
| R205,210<br>306,227,119                    | QRD143J-472S  | "                | 4.7K $\Omega$ "    | 5    |
| R211                                       | QRD143J-103S  | "                | 10K $\Omega$ "     | 1    |
| R215                                       | QRD147J-334S  | "                | 330K $\Omega$ "    | 1    |
| R233                                       | QRD143J-101S  | "                | 100 $\Omega$ "     | 1    |
| R239                                       | QRD143J-822S  | "                | 8.2K $\Omega$ "    | 1    |
| R251,301,302                               | QRD143J-332S  | "                | 3.3K $\Omega$ "    | 3    |
| R254                                       | QRD143J-683S  | "                | 68K $\Omega$ "     | 1    |
| R275                                       | QRD147J-154S  | "                | 150K $\Omega$ "    | 1    |
| R277                                       | QRD143J-122S  | "                | 1.2K $\Omega$ "    | 1    |
| R285                                       | QRD143J-474S  | "                | 470K $\Omega$ "    | 1    |
| R305                                       | QRD147J-393S  | "                | 39K $\Omega$ "     | 1    |
| R307,352                                   | QRD143J-102S  | "                | 1K $\Omega$ "      | 2    |
| R309                                       | QRD147J-332S  | "                | 3.3K $\Omega$ "    | 1    |
| R311                                       | QRD141J-1ROSY | "                | 1 $\Omega$ "       | 1    |
| R312                                       | QRD147J-270S  | "                | 27 $\Omega$ "      | 1    |
| R313,314                                   | QRD141J-4R7SY | "                | 4.7 $\Omega$ "     | 2    |
| R319                                       | QRD147J-150S  | "                | 15 $\Omega$ "      | 1    |
| R324,348                                   | QRD141J-225SY | "                | 2.2M $\Omega$ "    | 2    |
| R326                                       | QRD147J-101S  | "                | 100 $\Omega$ "     | 1    |
| R327                                       | QRD147J-151S  | "                | 150 $\Omega$ "     | 1    |
| R330                                       | QRD147J-680S  | "                | 68 $\Omega$ "      | 1    |
| R336                                       | QRD141J-154SY | "                | 150K $\Omega$ "    | 1    |
| R346                                       | QRD147J-560S  | "                | 56 $\Omega$ "      | 1    |
| R347                                       | QRD147J-470S  | "                | 47 $\Omega$ "      | 1    |
| R350                                       | QRD146J-100S  | "                | 10 $\Omega$ "      | 1    |
| R353                                       | QRD147J-153S  | "                | 15K $\Omega$ "     | 1    |
| R357                                       | QRD143J-682S  | "                | 6.8K $\Omega$ "    | 1    |
| FR301,302                                  | QRH141J-1RO   | Fusible Resistor | 1 $\Omega$ "       | 2    |
| C101,201                                   | QCS11HJ-201   | C.Capacitor      | 200pF 50V          | 2    |
| C102,202,113<br>213,123,223                | QET41HR-105   | E.Capacitor      | 1 $\mu$ F "        | 6    |



| Ref. No.                                                                 | Parts No.   | Parts Name      | Remarks        |      | Q'ty |
|--------------------------------------------------------------------------|-------------|-----------------|----------------|------|------|
| C134,234,135<br>235,143,243                                              | QET41HR-105 | E. Capacitor    | 1 $\mu$ F      | 50V  | 12   |
| C103,203,105<br>205,114,214                                              | QCS11HJ-330 | C.Capacitor     | 33pF           | "    | 6    |
| C104,204<br>115,215                                                      | QCS11HJ-101 | "               | 100pF          | "    | 4    |
| C106,206,120<br>220,125,225<br>162,262,338                               | QET41ER-475 | E.Capacitor     | 4.7 $\mu$ F    | 25V  | 9    |
| C107,207,122<br>222,152,252<br>155,255,305<br>340                        | QET41AR-476 | "               | 47 $\mu$ F     | 10V  | 10   |
| C108,208,111<br>211,116,216<br>124,224,129<br>229,240,141<br>241,139,239 | QET41HR-335 | "               | 3.3 $\mu$ F    | 50V  | 15   |
| C109,209,315                                                             | QFM41HJ-123 | Mylar Capacitor | 0.012 $\mu$ F  | 50V  | 3    |
| C112,212,117<br>217,334                                                  | QET41HR-474 | E.Capacitor     | 0.47 $\mu$ F   | "    | 5    |
| C118,218<br>154,254                                                      | QCS11HJ-151 | C.Capacitor     | 150pF          | "    | 4    |
| C119,219,318<br>323,325                                                  | QET41AR-107 | E.Capacitor     | 100 $\mu$ F    | 10V  | 5    |
| C121,221                                                                 | QCS11HJ-470 | C.Capacitor     | 47pF           | 50V  | 2    |
| C126,226,341                                                             | QCY41HK-472 | "               | 0.0047 $\mu$ F | "    | 3    |
| C127,227                                                                 | QCS11HJ-241 | "               | 240pF          | "    | 2    |
| C128,228,131<br>231,142,242                                              | QCS11HJ-301 | "               | 300pF          | "    | 6    |
| C130,230                                                                 | QFM41HK-154 | Mylar Capacitor | 0.15 $\mu$ F   | "    | 2    |
| C132,232<br>161,261                                                      | QFM41HJ-103 | "               | 0.01 $\mu$ F   | "    | 4    |
| C136,236                                                                 | QCS11HJ-561 | C.Capacitor     | 560pF          | "    | 2    |
| C137,237                                                                 | QCS11HJ-501 | "               | 500pF          | "    | 2    |
| C138,238                                                                 | QFS32BJ-391 | P.Capacitor     | 390pF          | 125V | 2    |
| C144,244                                                                 | QFM41HJ-683 | Mylar Capacitor | 0.068 $\mu$ F  | 50V  | 2    |
| C145,245                                                                 | QFM41HK-104 | "               | 0.1 $\mu$ F    | "    | 2    |
| C146,246                                                                 | QFM41HJ-182 | "               | 0.0018 $\mu$ F | "    | 2    |
| C147,247<br>159,259                                                      | QFM41HJ-153 | "               | 0.015 $\mu$ F  | "    | 4    |
| C148,248                                                                 | QEC41HM-224 | E.Capacitor     | 0.22 $\mu$ F   | "    | 2    |
| C149,249                                                                 | QET41CR-226 | "               | 22 $\mu$ F     | 16V  | 2    |
| C150,250                                                                 | QEC41HM-104 | "               | 0.1 $\mu$ F    | 50V  | 2    |
| C151,251<br>316,317                                                      | QCY41HK-332 | C.Capacitor     | 0.0033 $\mu$ F | "    | 4    |
| C153,253                                                                 | QCY41HK-681 | "               | 680pF          | "    | 2    |
| C156,256                                                                 | QCC11EM-104 | "               | 0.1 $\mu$ F    | 25V  | 2    |
| C157,257,321                                                             | QET41AR-108 | "               | 1000 $\mu$ F   | 10V  | 3    |
| C158,258,140                                                             | QEW21HA-335 | "               | 3.3 $\mu$ F    | 50V  | 3    |
| C160,260                                                                 | QEC41HM-104 | E.Capacitor     | 0.1 $\mu$ F    | "    | 2    |
| C301,302,303<br>307,313                                                  | QET41AR-227 | "               | 220 $\mu$ F    | 10V  | 5    |
| C304,308,309<br>327,328                                                  | QET41CR-227 | "               | 220 $\mu$ F    | 16V  | 5    |
| C306                                                                     | QET41AR-337 | "               | 330 $\mu$ F    | 10V  | 1    |
| C310                                                                     | QFM41HJ-472 | Mylar Capacitor | 0.0047 $\mu$ F | 50V  | 1    |
| C311                                                                     | QFS32BJ-331 | P.Capacitor     | 330pF          | 125V | 1    |
| C312                                                                     | QFP42AJ-183 | P.P.Capacitor   | 0.018 $\mu$ F  | 100V | 1    |



| Ref. No.     | Parts No.   | Parts Name          | Remarks            | Q'ty |
|--------------|-------------|---------------------|--------------------|------|
| C314         | QFP42AJ-223 | P.P.Capacitor       | 0.022 $\mu$ F 100V | 1    |
| C319,331     | QET41CR-106 | E.Capacitor         | 10 $\mu$ F 16V     | 2    |
| C320,332,335 | QCC11EM-103 | C.Capacitor         | 0.01 $\mu$ F 25V   | 3    |
| C322,337     | QET41CR-477 | E.Capacitor         | 470 $\mu$ F 16V    | 2    |
| C324         | QET41CR-108 | "                   | 1000 $\mu$ F "     | 1    |
| C326         | QET41CR-337 | "                   | 330 $\mu$ F "      | 1    |
| C329         | QET41CR-228 | "                   | 2200 $\mu$ F "     | 1    |
| C330         | QFM41HJ-122 | Mylar Capacitor     | 0.0012 $\mu$ F 50V | 1    |
| C333         | QET41CR-336 | E.Capacitor         | 33 $\mu$ F 16V     | 1    |
| C336         | QET41CR-107 | "                   | 100 $\mu$ F "      | 1    |
| C339         | QET41CR-476 | "                   | 47 $\mu$ F "       | 1    |
|              | A74138-2    | Test Pin            |                    | 6    |
|              | V43895-1    | Tab                 |                    | 6    |
|              | QMV5004-004 | Connector           | SPKR CN305-P       | 1    |
|              | VYH4204-001 | Radiation Plate     |                    | 1    |
|              | SBSF3014Z   | Tap. Screw          |                    | 2    |
|              | Q03095-206  | Washer              |                    | 1    |
| ①            | VYH2117-001 | Control Bracket     |                    | 1    |
| ②            | VJD3223-001 | Jack Board          |                    | 1    |
| ③            | VYSA1R6-036 | Spacer              |                    | 1    |
| ④            | SBSF3014Z   | Tap. Screw          |                    | 2    |
| ⑤            | SPSP2006Z   | Screw               |                    | 4    |
| ⑥            | WBS3000N    | T. Lock Washer      |                    | 2    |
| ⑦            | VYH4619-00A | Master Shield Ass'y |                    | 1    |
| ⑧            | VYSH125-001 | Spacer              |                    | 1    |



# Power Supply P.W. Board Parts

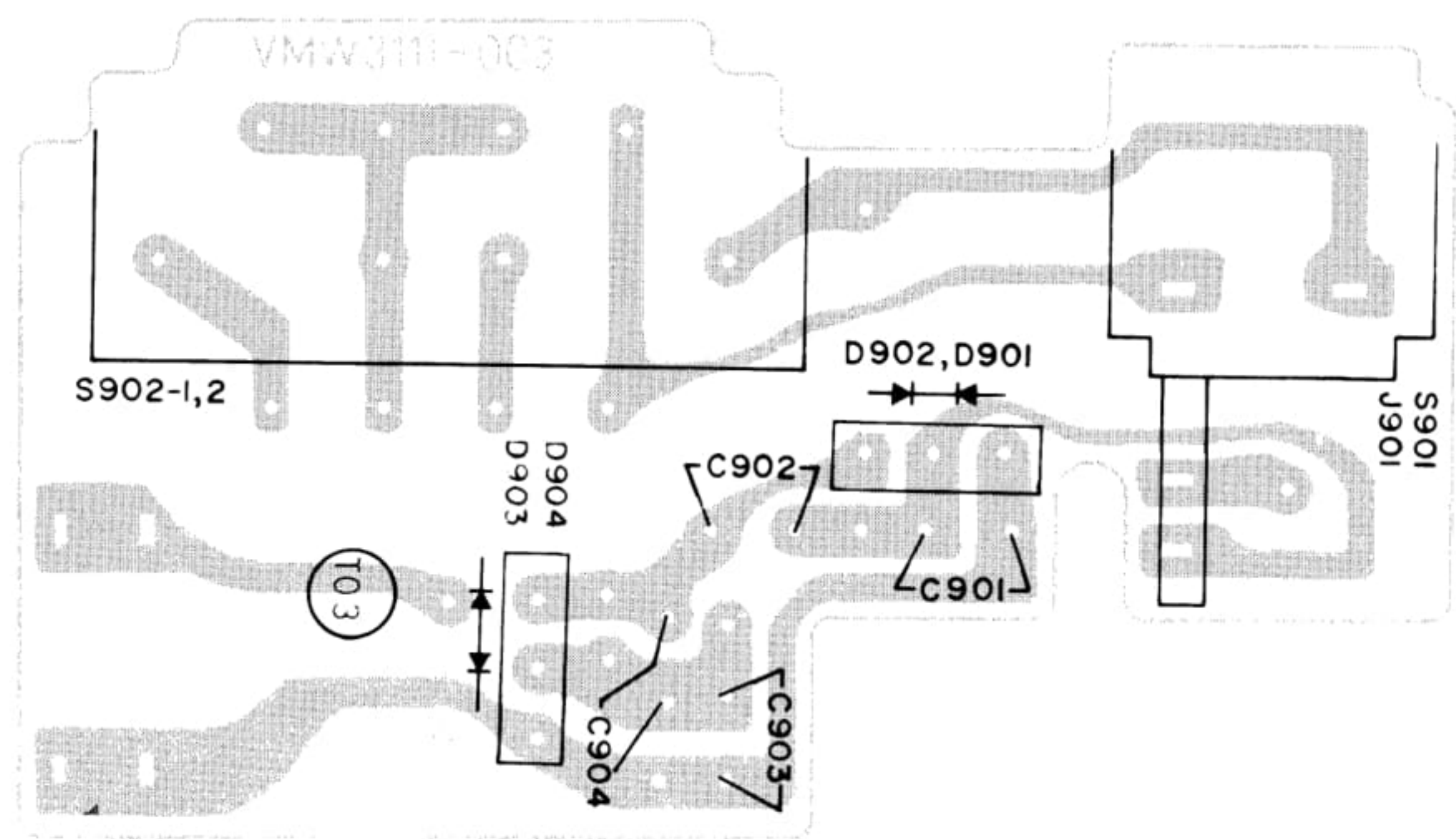


Fig. 37

## Power Supply P.W. Board Parts List

| Ref. No.                           | Parts No.     | Parts Name      | Remarks   | Q'ty |
|------------------------------------|---------------|-----------------|-----------|------|
| D901,902<br>D903,904<br>C901 ~ 904 | VMW3111-003   | P.W. Board      | for Power | 1    |
|                                    | DS131A        | Si. Diode       |           | 1    |
|                                    | DS132A        | Si. Diode       |           | 1    |
|                                    | QCF11EZ-103   | C. Capacitor    |           | 4    |
|                                    | QMF51A2-1R6   | Fuse            | RC-M60L   | 1    |
|                                    | QMF51A2-1R6BS | Fuse            | RC-M60LB  | 1    |
|                                    | A44594-001    | Fuse Clip       |           | 2    |
|                                    | QSS2325-109   | Slide Switch    | RC-M60L   | 1    |
|                                    | QSS2325-109BS | Slide Switch    |           | 1    |
|                                    | QMC0263-002   | AC Socket Ass'y | RC-M60L   | 1    |
| S902-1,2<br>J901,S901<br>"         | QMC0263-002BS | AC Socket Ass'y | RC-M60LB  | 1    |



Mecha Control P.W. Board Parts

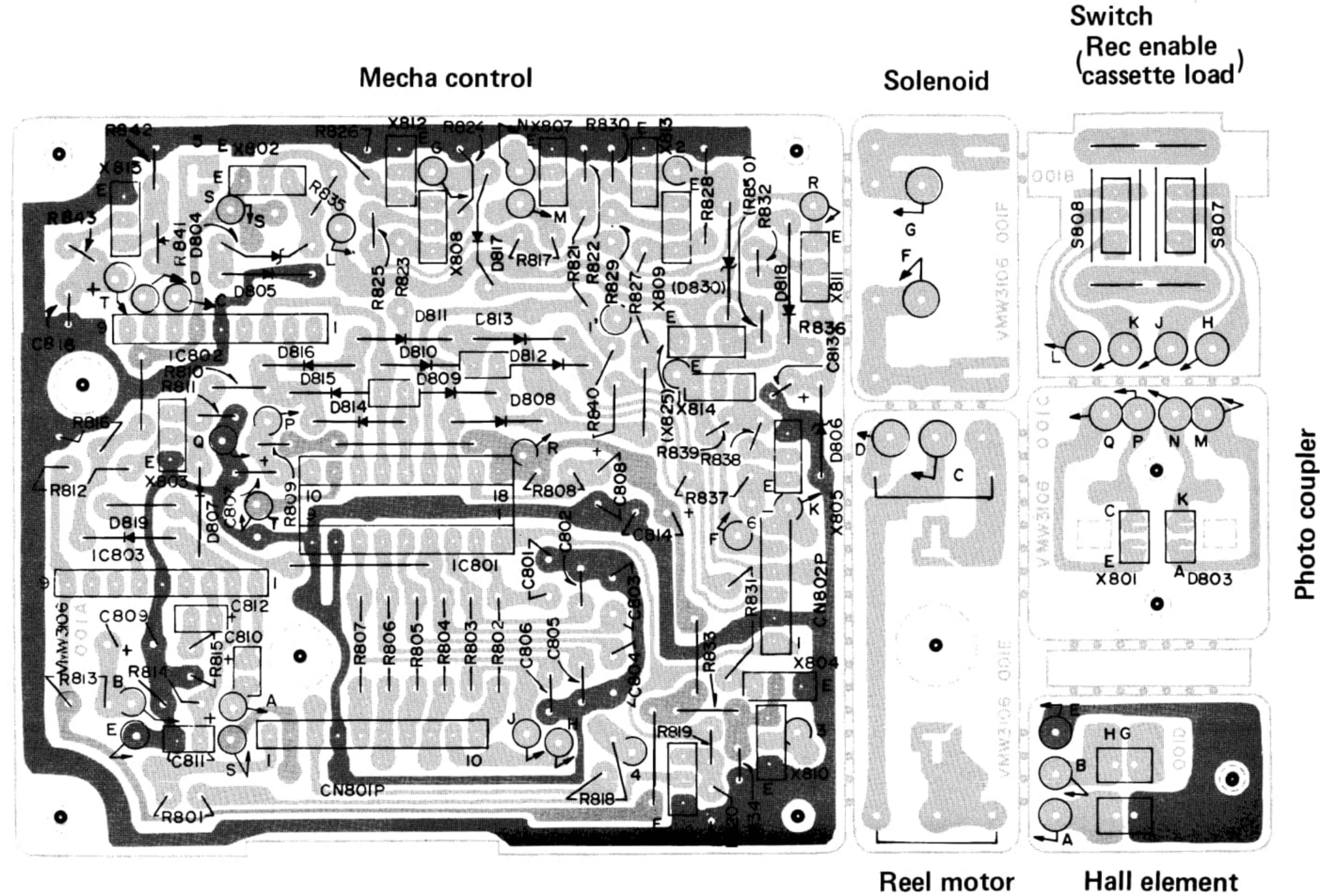


Fig. 38

Mecha Control P.W. Board Parts List

| Ref. No.         | Parts No.     | Parts Name  | Remarks           | Q'ty |
|------------------|---------------|-------------|-------------------|------|
| IC801            | VMW3106-001A  | P.W. Board  |                   | 1    |
| IC802            | VUC0002-001   | I.C         | for Control       | 1    |
| IC803            | BA6208A       | "           | for MOTOR Control | 1    |
| X802             | BA335         | "           | for Auto. Stop    | 1    |
| X803,804,805     | 2SC1162WT (C) | Transistor  |                   | 1    |
| 806,807,808      | 2SD636 (S)    | "           |                   | 9    |
| 809,810,815      |               |             |                   |      |
| X811             | 2SD468 (C)    | "           |                   | 1    |
| X812,813         | 2SC2673 (Q,R) | "           |                   | 2    |
| X814             | 2SA786 (P,Q)  | "           |                   | 1    |
| D804             | HZ7C          | Zener Diode |                   | 1    |
| D805,808,809,810 | 1S2076        | Si. Diode   |                   | 18   |
| 811,812,813,814  |               |             |                   |      |
| 815,816,819,820  |               |             |                   |      |
| 821,822,823,824  |               |             |                   |      |
| 825,826          |               |             |                   |      |



| Ref. No.     | Parts No.    | Parts Name          | Remarks            | Q'ty |
|--------------|--------------|---------------------|--------------------|------|
| D817,818,827 | 10E1         | Si. Diode           |                    | 3    |
| R801,810,823 | QRD143J-102S | C. Resistor         | 1k $\Omega$ 1/4W   | 5    |
| 836,837      |              |                     |                    |      |
| R802,803,804 | QRD141J-122S | "                   | 1.2k $\Omega$ "    | 6    |
| 805,806,807  |              |                     |                    |      |
| R808         | QRD143J-823S | "                   | 82k $\Omega$ "     | 1    |
| R809         | QRD143J-223S | "                   | 22k $\Omega$ "     | 1    |
| R811,824,842 | QRD143J-333S | "                   | 33k $\Omega$ "     | 1    |
| R812         | QRD143J-332S | "                   | 3.3k $\Omega$ "    | 1    |
| R813         | QRD143J-471S | "                   | 470 $\Omega$ "     | 1    |
| R814         | QRD143J-224S | "                   | 220k $\Omega$ "    | 1    |
| R815,817     | QRD143J-331S | "                   | 330 $\Omega$ "     | 2    |
| R818         | QRD143J-681S | "                   | 680 $\Omega$ "     | 1    |
| R819         | QRD143J-182S | "                   | 1.8k $\Omega$ "    | 1    |
| R821         | QRD141J-182S | "                   | 1.8k $\Omega$ "    | 1    |
| R825,829     | QRD143J-561S | "                   | 560 $\Omega$ "     | 2    |
| R826,830     | QRD143J-562S | "                   | 5.6k $\Omega$ "    | 2    |
| R827,831     | QRD141J-331S | "                   | 330 $\Omega$ "     | 2    |
| R828         | QRD141J-333S | "                   | 33k $\Omega$ "     | 1    |
| R832         | QRD146J-100S | "                   | 10 $\Omega$ "      | 1    |
| R833,838     | QRD143J-153S | "                   | 15k $\Omega$ "     | 2    |
| R835         | QRD143J-391S | "                   | 390 $\Omega$ "     | 1    |
| R837         | QRD141J-102S | "                   | 1k $\Omega$ "      | 1    |
| R839         | QRD143J-103S | "                   | 10k $\Omega$ "     | 1    |
| R840         | QRD143J-100S | "                   | 10 $\Omega$ "      | 1    |
| R841         | QRD143J-272S | "                   | 2.7k $\Omega$ "    | 1    |
| C807,808     | QEE41EM-105B | Tantal E. Capacitor | 1 $\mu$ F 25V      | 2    |
| C809         | QET41AR-477  | E. Capacitor        | 470 $\mu$ F 10V    | 1    |
| C810,813     | QET41HR-105  | "                   | 1 $\mu$ F 50V      | 2    |
| C811         | QET41ER-475  | "                   | 4.7 $\mu$ F 25V    | 1    |
| C812         | QET41AR-336  | "                   | 33 $\mu$ F 10V     | 1    |
| C814,815     | QET41AR-227  | "                   | 220 $\mu$ F "      | 2    |
| C816         | QET41CR-106  | "                   | 10 $\mu$ F 16V     | 1    |
| C824,826,827 | QCC11EM-104  | C. Capacitor        | 0.1 $\mu$ F 25V    | 3    |
| C825,821     | QCY41HK-472  | "                   | 0.0047 $\mu$ F 50V | 1    |
|              | V44611-006   | Formed Bus Wire     |                    | 2    |
|              | V44611-003   | "                   |                    | 2    |
|              | V43895-1     | Tab                 |                    | 1    |
| CN801P       | QMV5004-010  | Connector           |                    | 1    |
| CN802P,L14   | QMV5004-006  | "                   |                    | 1    |
|              | VYSP1R3-006  | Spacer              |                    | 2    |
| S807,808     | VMW3106-001B | P.W. Board          |                    | —    |
|              | QSP0029-001  | Push Switch         |                    | 2    |
|              | VMW3106-001C | P.W. Board          |                    | —    |
| X801         | PN202S       | Photo Transistor    |                    | 1    |
| D803         | TLR108D      | L.E.D               |                    | 1    |
|              | VKZ4135-001  | Spacer              |                    | 1    |
|              | VYH4450-001  | Photo Shell         |                    | 1    |
|              | VMW3106-001D | P.W. Board          |                    | —    |
|              | VHE610G      | Hall Element        | HG                 | 1    |
|              | VMW3106-001E | P.W. Board          | for Reel Motor     | —    |
| C820         | QEN21EM-106  | N.P.E. Capacitor    |                    | 1    |
| L801,802     | VQP0004-231  | Inductor            |                    | 2    |
|              | VMW3106-001F | P.W. Board          | for Solenoid       | —    |
| L803         | T41572-001   | Inductor            |                    | —    |
| S809         | VSH1108-001  | Switch Ass'y        |                    | 1    |



# Packing

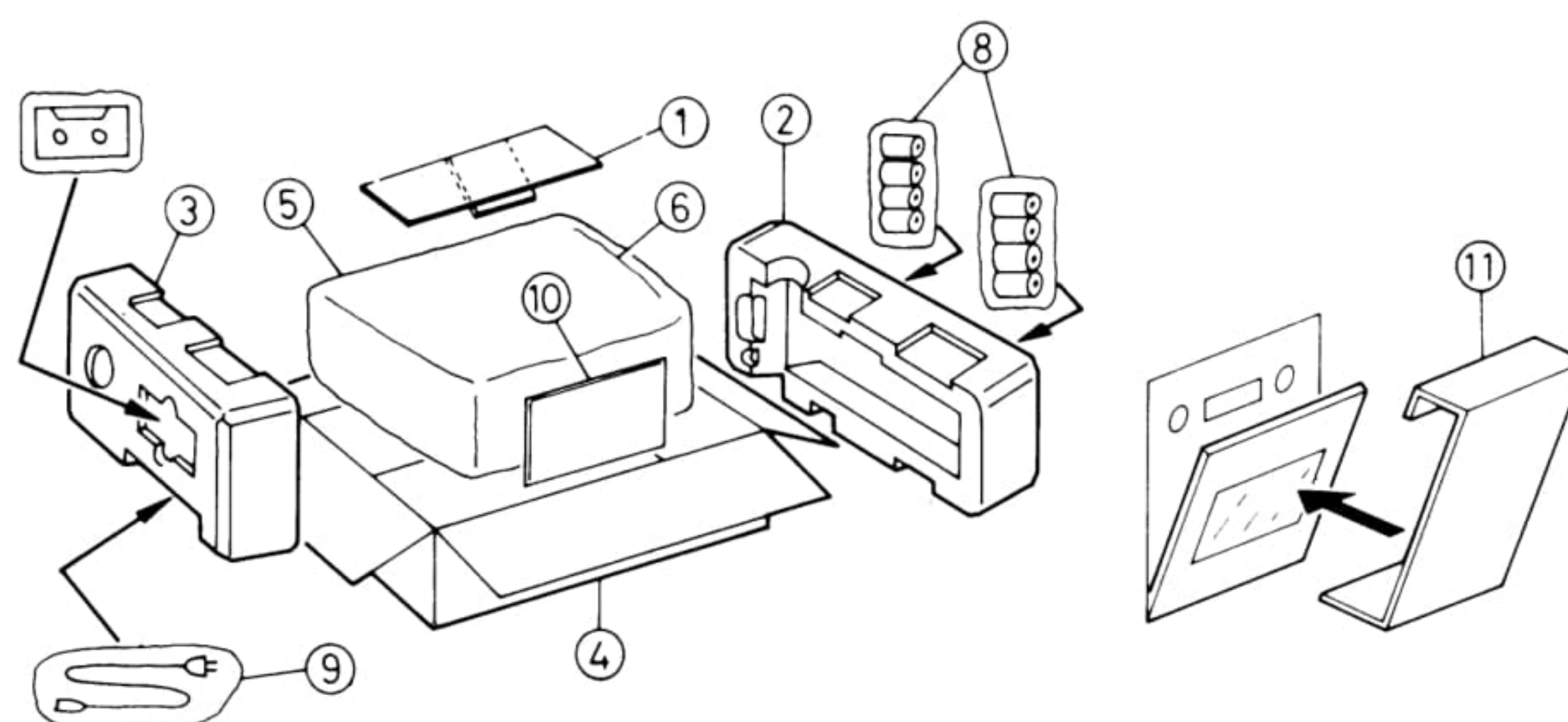


Fig. 39

## Packing Material Parts List

| Ref. No. | Parts No.     | Parts Name     | Remarks              | Q'ty |
|----------|---------------|----------------|----------------------|------|
| 1        | VPH4101-005   | Door protector |                      | 1    |
| 2        | VPH1201-001   | Side cushion   | (Left)               | 1    |
| 3        | VPH1203-001   | Side cushion   | (Right)              | 1    |
| 4        | VPD5060-J01   | Carton         | RC-M60LB             | 1    |
|          | " -J03        | "              | RC-M60L              | 1    |
| 5        | QPGA065-05004 | Poly bag       | for set              | 1    |
| 6        | VHPJ109-039   | Wrapping paper |                      | 1    |
| 8        | QPGA010-02003 | Poly bag       | for Batteries        | 1    |
| 9        | QPGA012-01505 | "              | for Power cord       | 1    |
| 10       | QPGB024-03404 | "              | for Instruction Book | 1    |
| 11       | VPK4136-002   | Spacer         |                      | 1    |

# Accessories

| Parts No.     | Parts Name            | Remarks              | Q'ty |
|---------------|-----------------------|----------------------|------|
| QMP9017-009BS | Power Cord            | RC-M60LB             | 1    |
| QMP3950-183   | "                     | RC-M60L              | 1    |
| QPGA012-02505 | Poly Bag              | for Power Cord       | 1    |
| VNM0773-301   | Instruction Book      |                      | 1    |
| QPGB024-03404 | Poly Bag              | for Instruction Book | 1    |
| VYA4002-001   | Short Plug            |                      | 2    |
| VGT12S3-J04   | Cassette Tape         |                      | 1    |
| 53866-2       | Label                 |                      | 1    |
| VYA4001-00A   | Head Cleaning Stick   |                      | 1    |
| VNF0777-001   | Feature Sticker       |                      | 1    |
| VNC6305-001   | Trouble Shooting      |                      | 1    |
| QZL1002-003BS | Warning Label         | RC-M60LB             | 1    |
| 31465-18      | Mark                  | RC-M60LB             | 1    |
| BT20013C      | Guarantee Certificate | RC-M60LB             | 1    |